

P R  
O J E  
C T  
S

Projects

The Beauty of Glass  
Lasvit Projects  
2018 / Volume I

LASVIT

$$\heartsuit + \otimes + \infty = \textcircled{\infty}$$



P  
R  
O  
L  
L  
O  
G  
U  
E

Beauty has not been here for a mere ten years. It'd been here since time immemorial, long before we began to worship it. It emerges, nurtures, fades. The dynamic power of the universe, of the planet, of the people. Of you and of me, of all life in all its forms.

Sparks in the eyes, inner flame, flames of passion, jealousy, eruptions on the Sun, invisible signals, floods of emotions. Not belonging to anyone, including us – the handful of devotees spreading the message in its name.

Just what is the Czech Republic and the few worldwide branches? These few hundred years of glassmaking tradition, those masters of the craft, this Leon Jakimič? What is design, or art? Who has the right to take themselves so seriously to place their ego above nature, and impose their judgement on beauty? On the way it's supposed to look, and on the way it's supposed to be viewed. No one, not even you.

Mere mastering the change of state – it's only sand, and then glass. Arts, procedures, nonsense about energy, wasting it or saving it. Market manipulations and light-speed races in disciplines that do not and never did exist.

Let it be, it's already set. Try to be free. Let live the coincidences, moods, feelings, and emotions. Smiles and astonishments. Eyes narrowed or wide open. All the rays, flashes – data, if you will. Stories. Hearts aflame, even if uncomfortable. Yes, even laughter, tears, and magic.

It's not about us, we're only trying for the light beaming somewhere to make an imprint. In the right moment – forever, perhaps – in glass and in such manner to make you gasp for air and turn blind with astonishment: “What beauty!”

For this, we love glass, for this we do it. Try to understand, and who knows – maybe you'll join in.



# C N E N T S O

## INSTITUTIONAL

Central Bank of Kuwait  
12

Changi Airport  
Singapore  
14

Dubai Opera  
18

Prince Mahidol Hall  
Bangkok  
22

The Dubai Metro  
28

## HOSPITALITY

Address Boulevard  
Dubai  
32

Ayana Midplaza  
Jakarta  
36

Bellagio  
Shanghai  
40

Coffeemania Moscow  
48

Conrad  
Guangzhou  
50

Fairmont Baku  
Flame Towers  
54

Fairmont Empress  
Victoria  
56

Fairmont  
Singapore  
58

Four Seasons  
Beijing  
60

Four Seasons  
Jakarta  
62

Four Seasons  
Kuwait  
66

Hotel De Paris  
Monte Carlo  
68

Hyatt Capital Gate  
Abu Dhabi  
72

Jumeirah at Etihad Towers  
Abu Dhabi  
74

Mandarin Oriental  
Bodrum  
78

Mandarin Oriental  
Li Feng Restaurant  
Jakarta  
80

Palazzo Versace  
Dubai  
84

Pullman  
Kaifeng  
86

Renaissance  
Phoenix / Downtown  
90

Rosewood  
Abu Dhabi  
94

Sake No Hana Restaurant  
London  
96

Shangri-La  
Manila  
98

So Sofitel  
Singapore  
102

Sofitel Sentosa Resort & Spa  
Singapore  
106

St. Regis  
Macao  
108

The Langham  
Chicago  
110

The Peninsula  
Hong Kong  
114

The Peninsula  
Paris  
118

The Westin  
Denver / Airport  
124

## RESIDENCES

Chateau Montferrier  
Périgueux  
128

Dhamani Residence  
Dubai  
132

Private Residence  
Beirut  
136

Private Residence  
Kolkata  
138

Private Residence  
London  
140

Private Residence  
Surabaya  
142

The Ritz-Carlton Residences  
Singapore  
146

## DEVELOPMENTS

One Park Gubei  
Shanghai  
150

Reignwood Pine Valley Golf Club  
Beijing  
154

Rihan Heights  
Abu Dhabi  
158

Sky  
New York  
160

Taikoo Place Apartments  
Hong Kong  
162

## COMMERCIAL

133 Wai Yip Street  
Hong Kong  
166

540 West Madison  
Chicago  
170

Kerry Centre Office Tower  
Beijing  
174

Lotte World Tower Diver Hall  
Seoul  
176

Office In Mayfair  
London  
182

OUE Downtown Gallery  
Singapore  
184

Pacific Century Place  
Beijing  
186

Quadrio  
Prague  
188

Tiffany & Co., Bellavita Store  
Taipei  
190

## NAUTICAL

Majestic Princess Cruise Ship  
196

## ARCHITECTURE

Hydrogene  
204

Lasvit Crystal Wall  
210

Lasvit Liquidkristal  
226



### Concept

Our clients provide us both space and opportunity; our obligation in return is focus, elegance and creativity.

Every Lasvit concept begins with the space and surroundings within which it will be displayed. Building styles are as individual as personal styles and our attention to appropriate detail is what allows conceptual creativity to thrive.

#### Space

Whether a luxurious dining room in a private residence or a hotel lobby meant to dazzle visitors and guests, each volume of space has its specific and unique character. Conceptually, we pay close attention to an area's size, volume, architectural features, natural light, best placement alternatives and the technical possibilities of the interior.

#### Surroundings

Concept must bend its knee to context — the surrounding visual environment available to the project. Having done so, Lasvit teams are free to dream their dreams, coming up with exciting possibilities that fit both budget and client requirements. Thus dreams become reality and the result is meant to be both radiant and singularly appropriate.



### Design

The expectations and requirements of our clients inspire us.

#### Creative Thinking

Definitive designs (3D models, sketches) are prepared by a carefully selected designer who is best able to anticipate and work creatively with our client's expectations and requirements. That designer refines the shapes of components, colors of glass and the illumination details of the sculpture.

#### Selection

When the preliminary design and costs are presented to the client, final and sometimes critical choices are made to refine their more fully detailed expectations. Final pricing and the signing of the production and installation contract are also included at this stage.

#### Always Unique

Just as every Lasvit glass creation has its own story of light and reflective brilliance, so do we constantly challenge ourselves to bring this unique work of art in glass to our clients.



### Project Management

Our teams breathe life into fantasies.

#### Teamwork

A critical building block of Lasvit's success is teamwork. A specific team and project manager are assigned to each project and assure a steady flow of communication between the designer, glass-masters, design engineers and installation specialists. The entire process is an exercise in efficiency, as the team must oversee each phase in order for every detail to be addressed without unnecessary delay or loss.

#### Preparation

Dedicated design engineers prepare technical drawings detailing the optimal solution for each sculpture, including how it must be installed and its light parameters. When and where Lasvit is involved, beauty goes hand in hand with absolute safety.

#### Always Authentic

We honor our proud Czech history of artisan glass-craft handed down through generations. Every project is entrusted to dedicated professionals and supported by the latest technical innovations.



### Manufacture

The luxury we deliver is unique.

#### Luxury approach

A hand-blown glass sculpture is the embodiment of an artist's vision brought to life by the effort and skills of our craftsmen. Its luxurious and unique essence can never be replaced by machine-made alternatives.

#### Professionalism

The entire process of creating and installing a light sculpture is provided by Lasvit. We have our own factories which produce electrical and construction components in the best possible quality. All this is supervised by professionals who are constantly on the lookout for new and original approaches to what we do best.

#### Always Bohemian

The Bohemian tradition and the culture of glass-making are our history and our foundation. Lasvit's responsibility is to inspire and empower the next generation to keep this tradition alive.



### Installation

Once all the components are prepared, it is our responsibility to deliver them to the customer. After that, our technical team comes in and provides professional and safe installation. We make sure that our work stands the test of time.

#### Quality

We are diligent when it comes to ensuring the quality of our product. Our professionals inspect each component, be it glass or any other, to the point of obsession. We consider it our duty to provide art that is not only beautiful but also safe and lasting.

#### Aftercare

When a sculpture is purchased by the customer, work is not yet finished. We provide quality wrapping, worldwide shipping, professional and safe installation and, most importantly, consistent aftercare. The goal is to assure our clients that the piece of art they purchased can be a long-lasting gem whose value will grow over time.

#### Always Perfectionist

As artisans, we obsessively seek to create and preserve objects of beauty and desire — quality work with timeless value, nobility and integrity.

I N N  
S T I T  
U T I  
O N  
A L

## CENTRAL BANK OF KUWAIT

The Central Bank of Kuwait recently opened its new headquarters in Sharq, Kuwait City under the patronage of His Highness the Amir Sheikh Sabah Al-Ahmad Al-Jaber Al-Sabah. When commissioning the new headquarters, the Central Bank of Kuwait requested an iconic world-class building that would proudly stand as a new landmark. The 42-storey tower is now one of the tallest buildings of the Kuwait City skyline.

### Moon

The Governor's Entrance is adorned with a nearly four-meter blue Moon. Inspired by night sky and stars, this dynamically-lit lighting sculpture represents an artistic vision of a planet in space. The sphere creates an impression of infinite surface, covered with hand-blown glass cones. Its random texture, along with internal programmed LEDs, creates a play of light and color that energizes the imagination.

Special Thanks to  
Interior Designer / HOK  
Lasvit Product Designer / Libor Sošťák  
Central Bank of Kuwait





## CHANGI AIRPORT SINGAPORE

Singapore's Changi Airport is one of the largest airports in Southeast Asia, welcoming almost 60 million passengers annually. It is also repeatedly recognized as the World's Best Airport, according to Skytrax. More than 100 airlines served by Changi Airport take travelers to some 380 cities in about 80 countries and territories worldwide. Since its opening in 1981, Changi Airport has been a pioneer in integrating airport gardens, which are now a well-loved feature among all travelers.

### Crystal Garden

Crystal Garden is an artistic rendition of dandelion flowers whose sleek, ephemeral beauty imbues the third terminal's jet-setting environment with a little spark of nature. The installation consists of 12 glass dandelions of various sizes, ranging from 60 to 150 cm in diameter and comprising a total of 1,735 hand-blown glass components. A number of pre-programmed choreographies create the effect of a person blowing for a wish come true, and scattering the dandelion seeds to all the distant corners of the globe.

---

Special thanks to /  
Interior Designer / Janet McGlennon Interiors  
Lasvit Product Designer / Petra Junová  
Changi Airport Group









## DUBAI OPERA

Designed by Janus Rostock of Atkins, Dubai Opera resembles a traditional dhow boat and all elements of the interior and exterior are in keeping with the heritage of Dubai which revolves largely around the water-based industries, such as fishing and pearl fishing. The design is a stunning new creation from Lasvit which will greet guests as they enter Dubai Opera.

### Symphony

The dynamically-lit glass sculpture titled Symphony by Lasvit will span three floors of the main atrium and, much like the building itself, the sculpture was inspired by the element of water and Dubai's maritime past. It is composed of thousands of individually crafted glass pearls – the concept of pearls adding preciousness, rarity and timelessness, which are qualities inherently present in hand-blown glass and crystal. The overall shape of the sculpture also draws its inspiration from fishing nets in a vortex of bubbles rising through the depths of the sea.

---

Special Thanks to  
Interior Designer / VVA International  
Lasvit Designer / Libor Sošták  
EMAAR Properties PJSC









## PRINCE MAHIDOL HALL BANGKOK

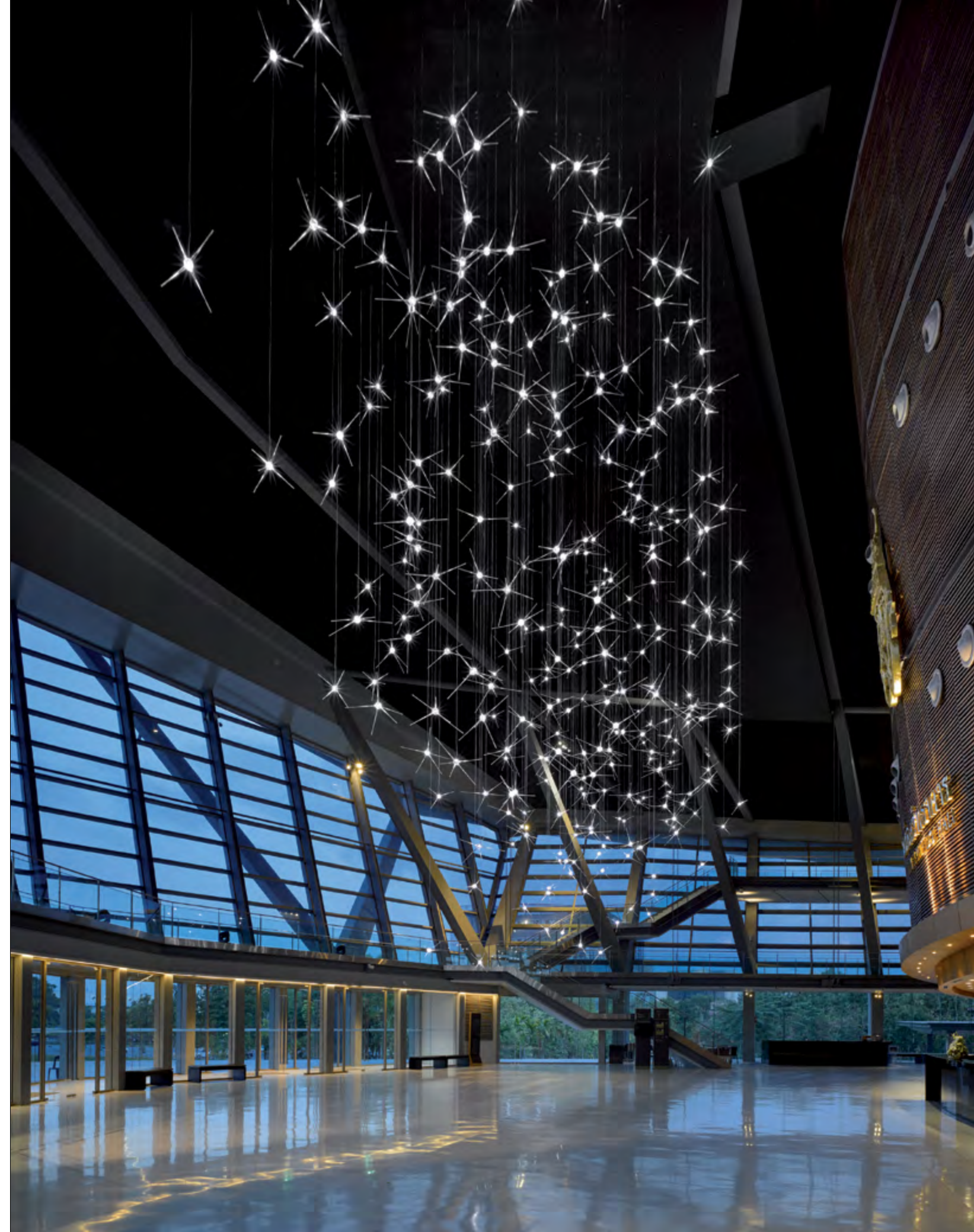
Prince Mahidol Hall was completed in 2014 and drew well-deserved attention. It's a world-class facility with a 2,000-seat theater designed specifically with natural acoustics for opera and symphony orchestras. The architects referenced organic structures as well as the pitch form often found in traditional Thai architecture. The double-layer roof is designed to eliminate exterior noise, while the lobby and corridors along the exterior glazed walls provide stunning views.

### Neurons

Commissioned by The College of Music of Mahidol University, Lasvit created a lighting sculpture titled Neurons, responding to music played in the concert hall with varied light sequences and colors, turning rhythms and melodies into visual experiences.

---

Special Thanks to  
Interior Designer / Interior Designer A49  
Lasvit Product Designer / Jana Růžičková  
College of Music, Mahidol University













## THE DUBAI METRO

Two major metro stations in Dubai, Khalid Bin Al Waleed Station and Al Rigga Station, have accented their modern look with impressive decorative light fixtures designed by Lasvit. Busy servicing tourists, businesspeople, politicians, shoppers, and others, the Dubai Metro stations are seen and visited by countless people on a daily basis. Recent renovations have brought light and modern luxury to the Dubai Metro.

### Water

The beautiful Water lighting sculpture, designed by Jitka Kamencová Skuhravá, graces the ceilings of the Khalid Bin Al Waleed Station. Two parts make up Water, which has come to be coined “a giant jellyfish” by the public. The base features textured bent glass that connects to the second part — a stylized waterfall phased into hand-blown, hollow glass drops. A stainless steel finish completes the design, which uses LEDs and RGB-based optical fiber with a 150W projector to cast its beautiful glow.

Special Thanks to  
Interior Designer / KCA International  
Lasvit Product Designer / Jitka Kamencová Skuhravá  
RTA





H O S  
P I T  
A  
L I Y  
T Y

## ADDRESS BOULEVARD DUBAI

Address Boulevard Dubai worked with the world's most innovative designers to create distinctive hotel interiors, aligned with the beauty of its modern architecture. Lasvit, a world-renowned and award-winning Czech glass manufacturer, is among these carefully selected companies. Lasvit designed and produced a 46-piece collection which thematized the Spirit of Timeless Luxury that captures the essence of elegance in the magical medium of glass.

### Felicity

Both the overall shape and the individual elements take on the drop-shape of a Baroque pearl — a natural creation that is feminine and delicate, yet strong in its physical structure and symbolism. The subtle warm color scheme underpins this overall effect.

### Adorn

The 4-meter lighting sculpture in the Lobby Lounge, titled Adorn, aims to truly adorn the room — adding beauty, light and elegance to a modern interior. Its pronounced and glittering metalwork resembles layered bracelets, naturally enhanced by hand-made glass elements.

---

Special Thanks to  
Interior Designer / HBA Dubai  
Lasvit Product Designer / Jana Růžičková  
EMAAR









AYANA MIDPLAZA  
JAKARTA

The life-giving interplay of green nature and the boundless blue ocean and sky could not happen without the presence of pristine water, surrounding Jakarta like a pearl at the bottom of the sea. And it was the water element which had originally inspired Táňa Dvořáková's Twill — the centerpiece adorning the Ayana Hotel's Prefunction and Ballroom area.

Twill

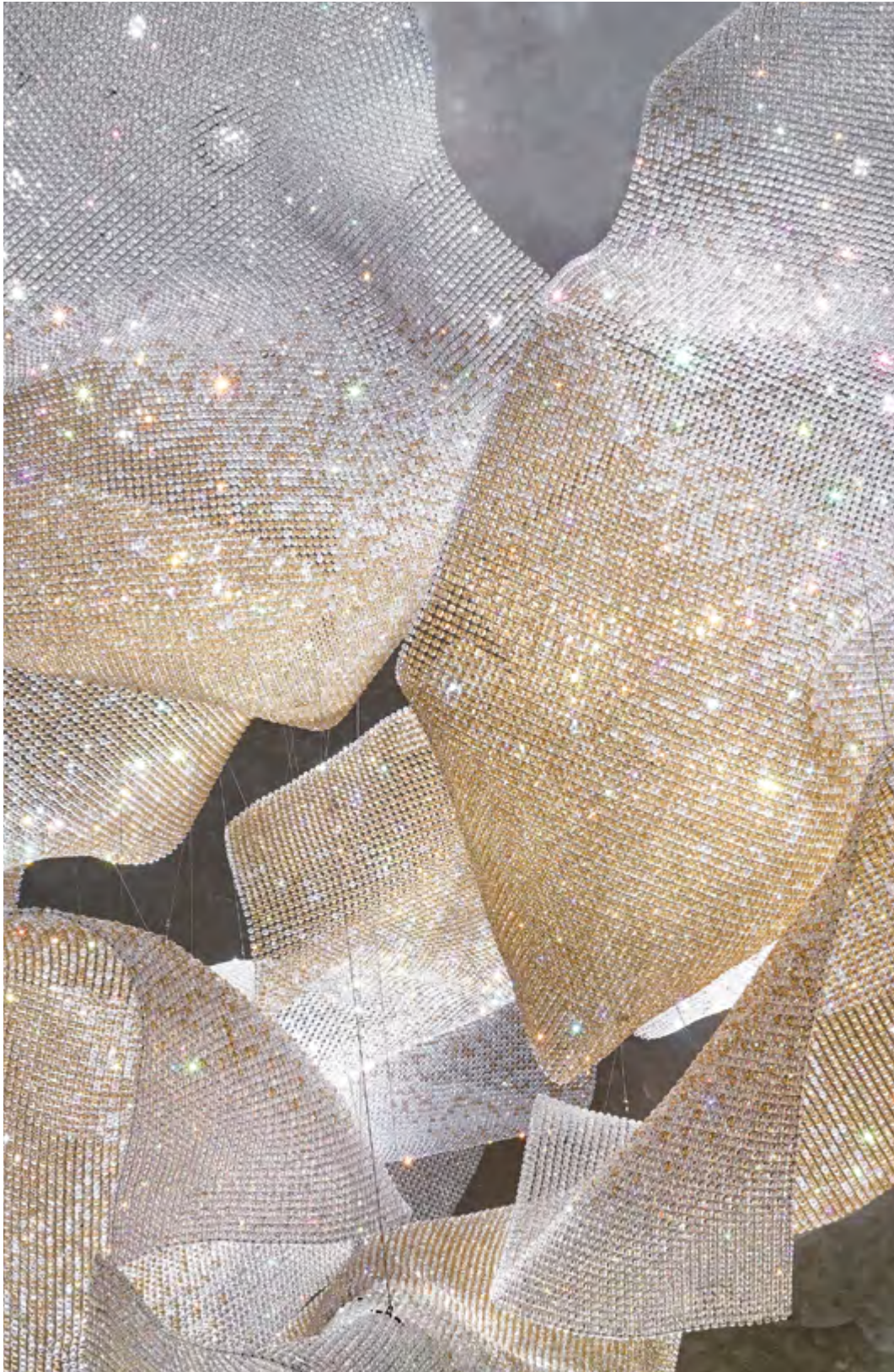
Táňa Dvořáková's lighting sculpture is composed of thousands of cut-crystal beads composing ribbons which are then intertwined, as if carried by flowing water. With prismatic reflections playing off the facets, the piece resembles the ripples and currents of a singing stream.

---

Special Thanks to  
Interior designer / Spin Design  
Lasvit Product Designer / Táňa Dvořáková  
MidPlaza Holding









The art-deco interiors of this luxury five-star hotel are the perfect place for the Lasvit installations displayed in its interiors. Harkening back to the golden age of Shanghai, the so-called 'Paris of the East', the hotel is the perfect place for a fusion of the new with the old, of the traditional with the cutting-edge.

Plisse

The Plisse Collection designed by Maurizio Galante, one of the world's best known haute couture designers, takes a unique spin with this large-scale installation. Inspired by the primary fashion elements, softness and the typical movement of fabric are transformed here into glass.

Ballroom Dropoff

Creating unique geometric shapes, from glass elements weighing more than 11 tons, this Lasvit sculpture, designed by Luděk Hroch, dominates the ballroom dropoff and lightens the day of everyone who enters this art-deco inspired space.

Staircase

The cutting-edge in this fusion of new and traditional interior design is represented by a unique piece by Adam Kohout, located in the staircase area. The more than 13-meter-long lighting sculpture combines raw chain-like elements and delicate glass.

Retail Promenade

Inspired by flowers, the retail promenade glass piece, designed by Věra Soukupová, embodies the art-deco style and combines it with her unique approach.

Special Thanks to

Interior Designer / Wimberly Interiors LA  
Lasvit Product Designer / Plisse / Maurizio Galante  
Lasvit Product Designers / Ballroom Dropoff / Luděk Hroch  
Lasvit Product Designer / Lobby Lounge / Adam Kohout  
Lasvit Product Designer / Retail Promenade / Věra Soukupová  
Suning Real Estate Group



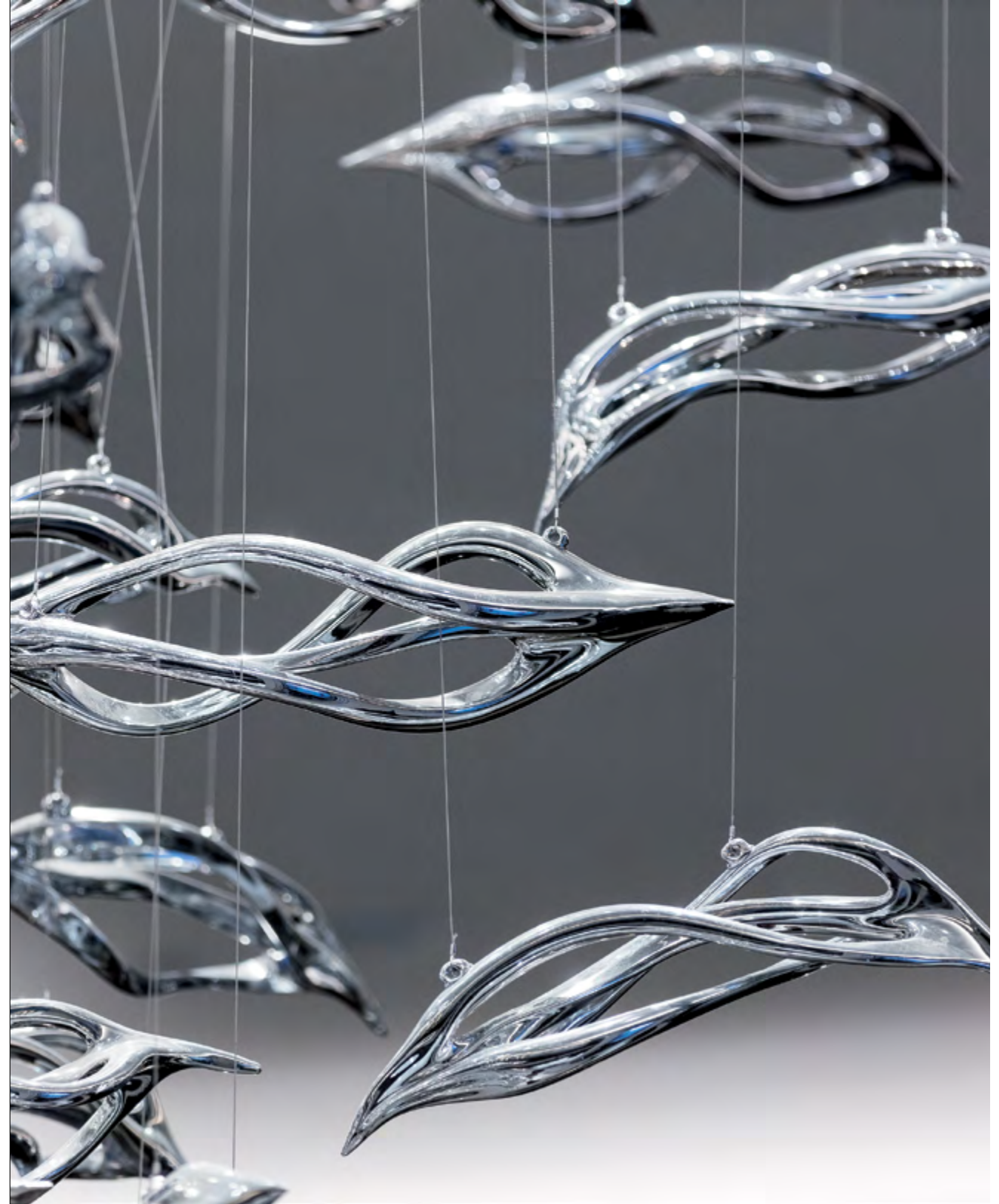














## COFFEEMANIA MOSCOW

The Coffeemia restaurant was designed by David Collins Design Studio as a flagship branch of the Coffeemia chain so that, in addition to its great coffee and famous culinary delights, it would also offer a sophisticated design experience for its visitors. Moscow's trendy Coffeemia restaurant is in the city center, not far from the Red Square. Based on designs by London's famous David Collins Design Studio, Lasvit's glass and metal artisans have created 70 custom-made chandeliers and table lamps that perfectly complement the restaurant's ambiance.

### Coffeemia

Lasvit's custom-made chandeliers elegantly follow the shape of an octagon. Metal foundations in two layers embrace flat glass components in a white and golden tone. The metal has an aged brass surface finish which gives all chandeliers an old-time feeling. The custom-made table lamps, also created in an octagon shape, follow the chandeliers' esprit and represent the same old-time style. Each lamp has a delicate metal base filled with flat glass components. The design is completed with a leather and metal stand in antique patina that nicely blends with the restaurant's furniture.

Special Thanks to  
Interior & Product Designer / David Collins Studio  
Coffeemia





Straddling the banks of the Pearl River, the metropolis of Guangzhou is one of the busiest, most energized and fast-paced places on the planet. That is why the Conrad Hotel offers their patrons a subtle, soothing experience. Lasvit's staircase installation gives the interior a soft, earthen aesthetic which calms weary eyes and refreshes the tired mind.

Staircase

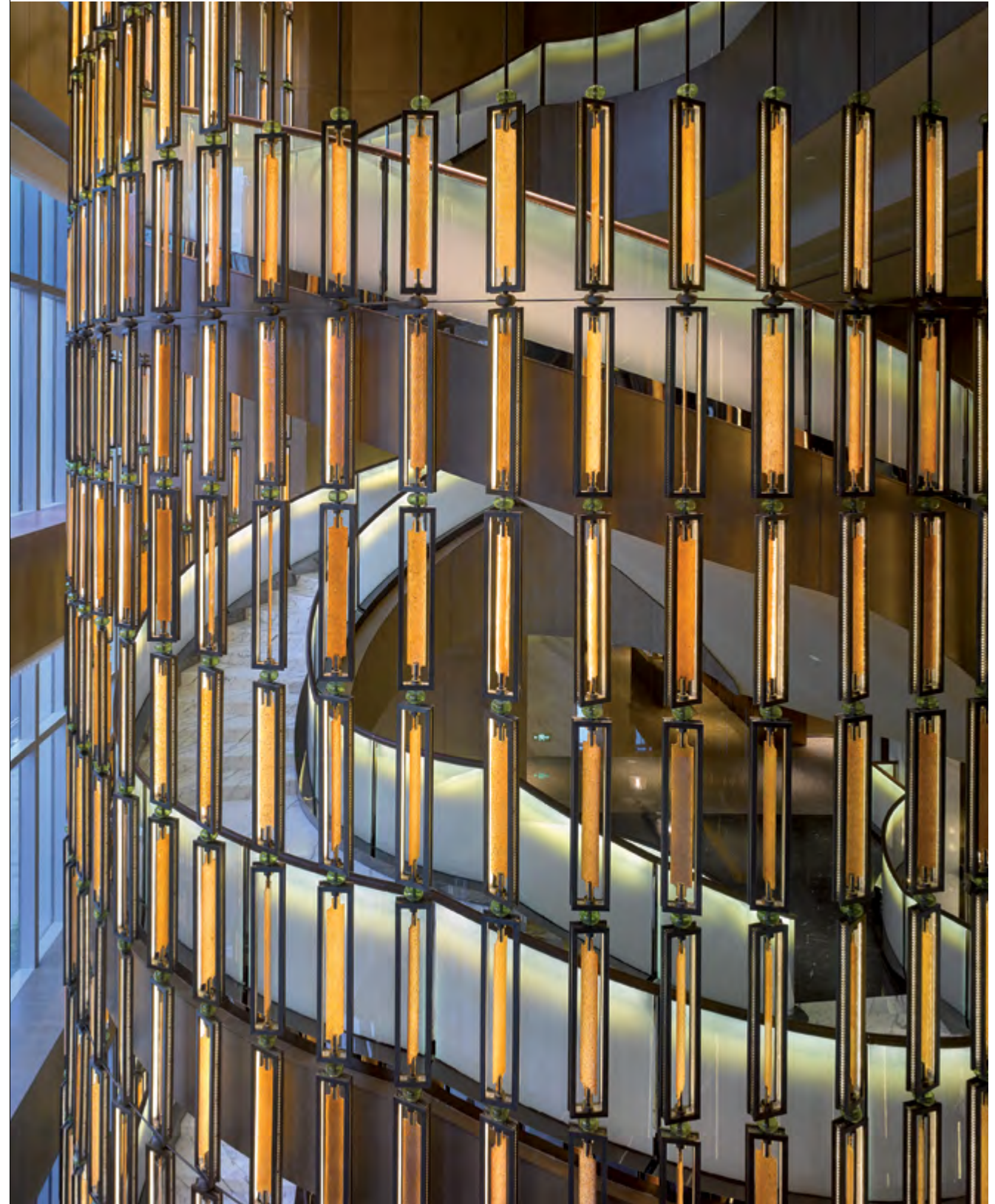
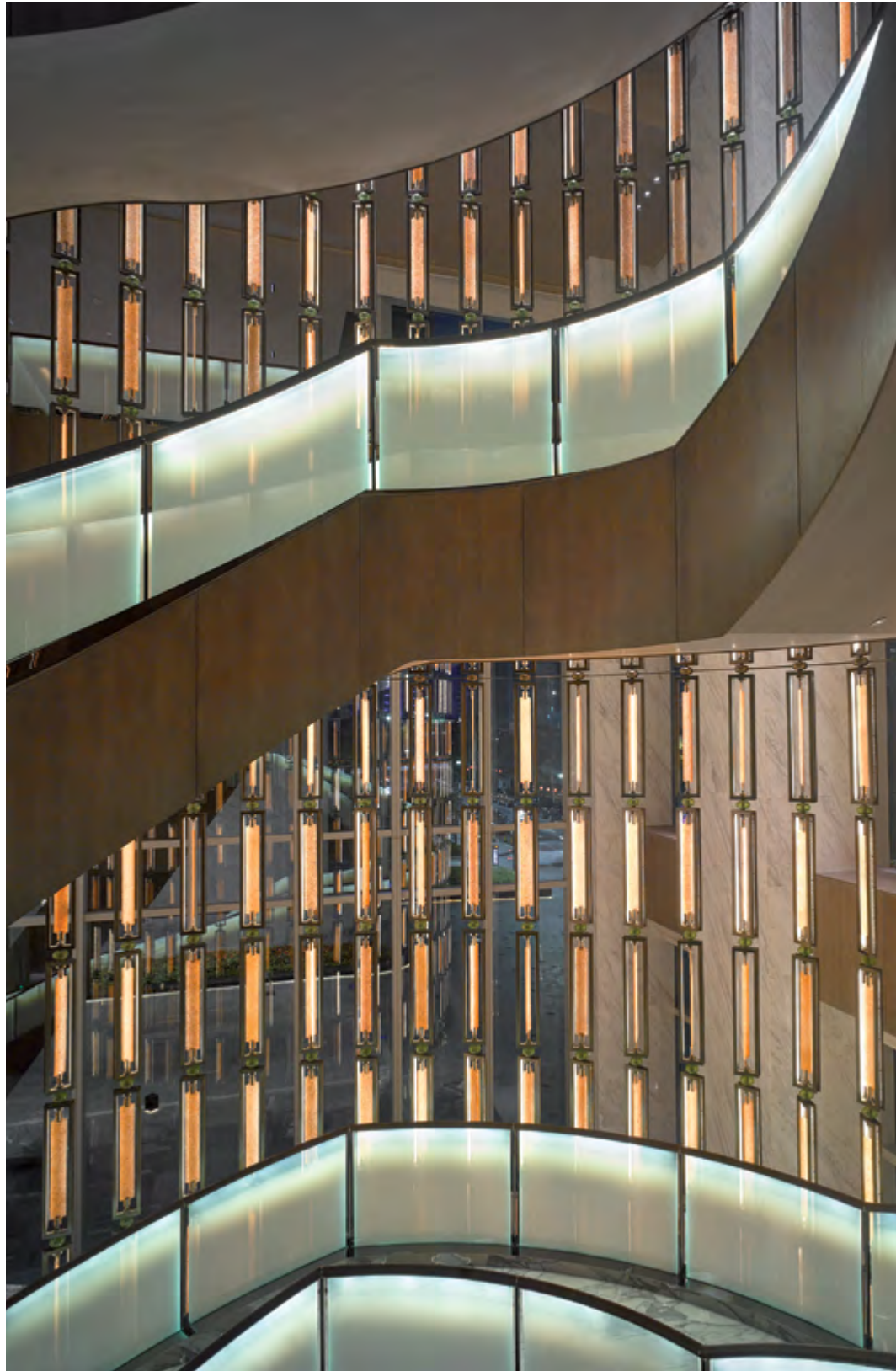
The staircase sculpture uses earthen yellow as its main color scheme, which signifies neutrality and brings good luck. The plates are made of fuse-glass which, apart from capturing sunlight, helps disperse the light from the LEDs planted inside the gold-plated metal frame.

Special Thanks to

Lasvit Product Designer / Ari Mahardhika  
Interior Designer / AB Concept  
Guangzhou R&F Properties









## FAIRMONT BAKU FLAME TOWERS

Fairmont Baku, Flame Towers stands as an iconic gateway to the Azerbaijani capital city of Baku, overlooking the waters of the Caspian Sea. The luxurious Fairmont hotel in the new, extraordinary Flame Towers complex, the tallest building in Baku, overlooks the vibrant, up-and-coming city. As the largest city and port of Azerbaijan, it also boasts a prime location on the Absheron Peninsula, surrounded by the wondrous Caspian Sea. Lasvit unique glass art installations, which were hand-crafted in Bohemia, beautifully complement the hotel's interior.

### Desert Rose

The prefunction area corresponds with the ballroom in color, concept and design, again made by Katarína Kudějová-Fulínová. Esthetically bound with nature, the inner petal-like pattern of stainless steel and flat painted glass within the lighting sculpture resemble the desert rose — a crystal formation of the sand. The allusion is a reference to the history of glassmaking, which also began with the play of sun and sand.

Special Thanks to  
Interior Designer / HBA  
Lasvit Product Designer / Katarína Kudějová-Fulínová  
DIA Holding





## FAIRMONT EMPRESS VICTORIA

Fairmont Empress graces Victoria's sparkling Inner Harbour with an iconic presence. This luxury hotel in Victoria, British Columbia offers 464 beautifully appointed guest rooms and suites, and expansive meeting and wedding space adjacent to the conference centre. Located on the picturesque West Coast of Canada, this is the ideal location to explore all the natural beauty of Vancouver Island.

### Twil Flowers

Lasvit designer Tāna Dvořáková, in collaboration with HBA San Francisco and Bosa Development, created two unique lighting sculptures, using her original 'Twill' technique of connecting glass beads into fabric-like textures. The intricate weave is derived from a traditional method of braiding threads wound on bobbins to weave lace. In this case, fine crystal hand-cut beads are intertwined into a mesh that forms pliable sheets, refracting light in rainbow colors. The two crystal sculptures named Twil Flowers, inspired by rose petals, were designed specifically for Fairmont Empress, based on the concept by HBA.

Special Thanks to  
Interior Designer / HBA  
Lasvit Product Designer / Tāna Dvořáková  
Bosa Development





Embark on a unique and luxurious journey at Fairmont Singapore, located in the heart of The Lion City. Ideally situated at the crossroads of Singapore's central business districts and world-class shopping and entertainment, Fairmont Singapore is positioned directly above the City Hall underground station with easy connection to Singapore Changi Airport. As a pioneer property of Fairmont Hotels & Resorts in Asia, Fairmont Singapore remains strongly committed to embracing the unique culture, traditions and heritage of the extraordinary locale while maintaining luxury and relevance.

Floral

The Anti:Dote lobby bar sports Floral, a unique lighting sculpture. Although geometric at first sight, a closer look reveals flowers captured within the design. As a whole, this glass sculpture makes up a local floral design called Peranakan. The flowers symbolize balance, hope and pleasure. The combination of clear borosilicate glass rods with amber tones creates contrast, enabling the flowers to stand out, yet at the same time complement the surrounding interior.

Special Thanks to  
Interior Designer / EDG Singapore  
Lasvit Product Designer / Katarína Kudějová-Fulínová  
RC Hotels





## FOUR SEASONS BEIJING

This luxury hotel, located within the Yansha area of the Central Business District, is positioned in the city's most dynamic business and entertainment area. The Four Seasons Hotel is warm and individual touches enhance the residential feeling of this luxurious Beijing accommodation. Illuminated glass sculptures by Lasvit adorn different parts of the hotel; they can be seen in the lobby area, multifunction room and in the Italian and Chinese restaurant.

### Spin

This plastic design comes from an asymmetric quadrangle rotating in space. The addition of cut décor softened the masculine shape of the plastic.

### Special Thanks to

Interior Designer / Hirsch Bedner Associates  
Lasvit Product Designer / Katarina Kudějova-Fulinova  
Ever Green





## FOUR SEASONS JAKARTA

Designed by César Pelli, an architect of international legendary status, with interiors by Alexandra Champalimaud, a member of the Interior Design Hall of Fame, the hotel started out with an all-star design team. The result is a light-filled, modern classic interior with captivating art, surrounded by tropical gardens. The emphasis on detail is underscored by a subtle color scheme and the use of high quality materials. These include fine leather, brass, marble and Bohemian crystal glass.

### Palm Grove

The majestic chandelier, suspended from the 13-meter (43-foot) cupola ceiling, is the first detail to catch one's eye, as well as an element that sets the tone for the culinary experience about to take place. The lighting sculpture features 14 fan-like clusters, each up to 2m in diameter. The metal central spheres are surrounded by light-carrying glass rods.

Special Thanks to  
Interior Designer / Champalimaud Design  
Lasvit Product Designer / Adam Kohout  
PT. Rajawali Corporation









## FOUR SEASONS KUWAIT

Four Seasons Hotel Kuwait is located in Burj Alshaya, a 205-meter skyscraper which is the new, stylish centerpiece of Kuwait City. Its design aims for sleek, avant-garde luxury, suitable as a prestigious backdrop for business and leisure, while offering one of the most breathtaking views which the city has to offer. Lasvit collaborated with international design studio Yabu Pushelberg to create exceptional lighting sculptures for the Lobby. Instead of installing the world's largest crystal chandelier, the designers pared back this concept and designed the world's largest diamond-like crystal.

### The Diamond

Large diamond-like crystal weighing 900 kg and featuring 150 prismatic components, as well as a smaller one weighing 350 kg with 68 prisms. Its multifaceted asymmetry is extremely compelling, and it beautifully reflects and refracts light onto its surroundings.

Special Thanks to  
Interior Designer / Yabu Pushelberg  
Lasvit Product Designer / Zbyněk Krulich, Maxim Velčovský  
Alshaya





## HOTEL DE PARIS MONTE CARLO

The Hôtel de Paris Monte Carlo is a luxurious five-star Palace located in Monaco. It was opened in 1863 under the auspices of Charles III of Monaco, and has since been offering some of the world's best dining and accommodation services. As of 2014, the hotel is undergoing an important four-year renovation and restructuring program, aiming to realize François Blanc's dream of "a hotel that surpasses everything that has been created until now." Lasvit's installation Magnetic is a part of these renovations and will complete the new, updated, and wholly fresh experience.

### Magnetic

Suspended above the heads of the hotel's patrons is a dazzling spectacle, a glistening canopy of glass components which bathe the ceiling and the hall below in shining brilliance. The hotel's visitors can see this installation in three spaces: the main lift lobby, and at two places in the Circulation Rotonde on the ground floor. The largest installation is a full 10 x 2 meters. Each component is made by means of a different glass-working technique — there are some which are made from blown industrial glass, hand-cut crystal, glass shards, while others are traditional glass components.

Special Thanks to /  
Interior Designer / Affine Design  
Lasvit Product Designer / Libor Sošťák  
Société des Bains de Mer









## HYATT CAPITAL GATE ABU DHABI

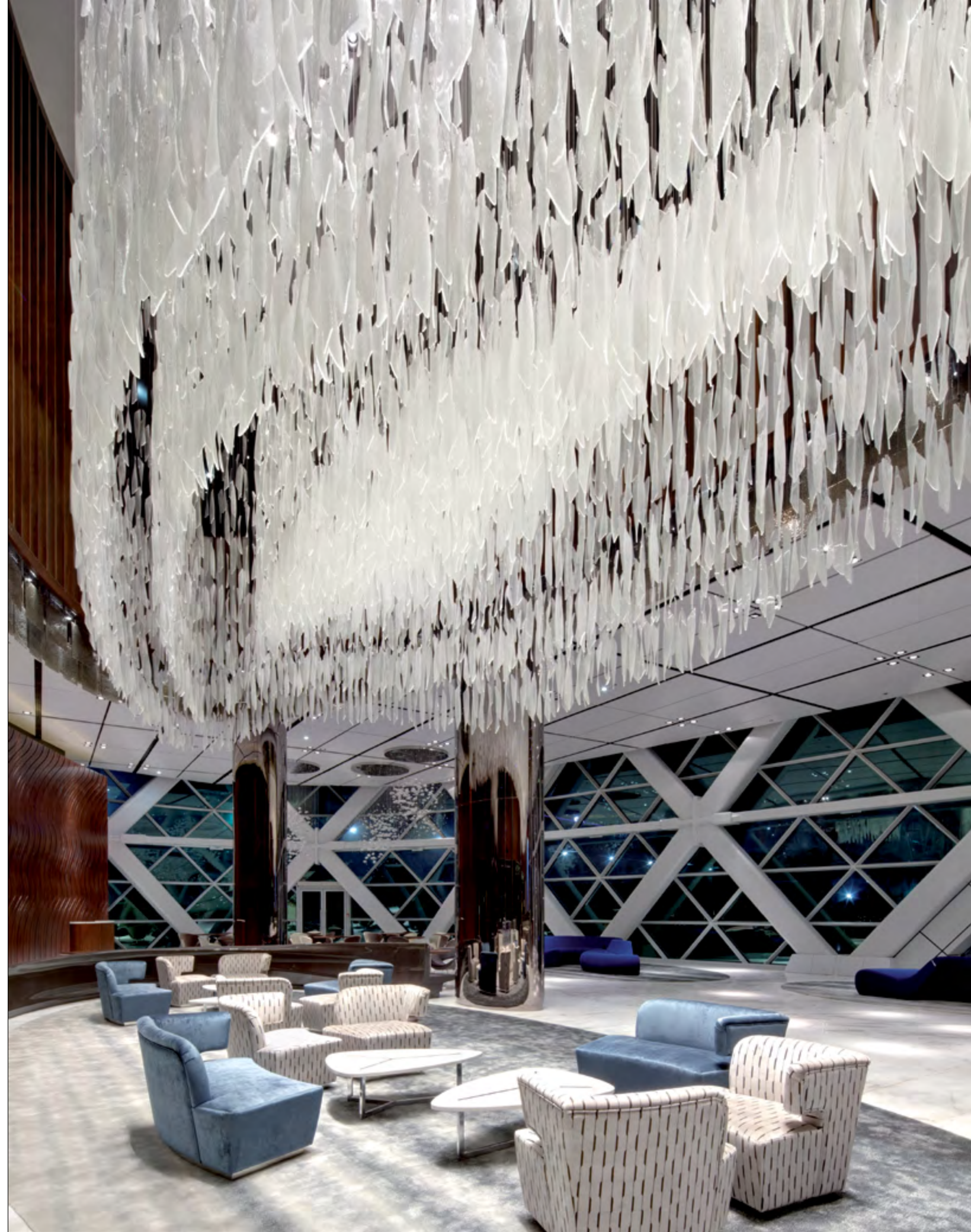
As a premier business location in the United Arab Emirates, Capital Gate is an impressive tower that provides exclusive office space as well as five-star hotel accommodation at Hyatt Capital Gate. The futuristic design of this tower represents Abu Dhabi's recent technical and cultural evolution. Hyatt Capital Gate boasts a unique shape with sleek exterior styling. In an effort to honor the past and rejoice in the future, Lasvit furnished a one-of-a-kind glass art lighting fixture for the Capital Gate lobby.

### The Wave

The Wave installation reminds its observers of a long ocean wave which winds around the elliptical shape of the lighting. It is over 17 meters long, almost 5 meters wide, 9 meters high and compounded of more than 6,200 components. The ellipse is designed in three layers, embellished with hand-blown and hand-shaped pieces installed vertically. Most of them are made of clear glass and decorated with relief lines.

### Special Thanks to

Interior Designer / U+A Interiors Lighting Designer DPA Lighting Consultants  
Lasvit Product Designer / Mária Čulenová Hostinová, Martin Dufresne of U+A Interiors  
ADNEC





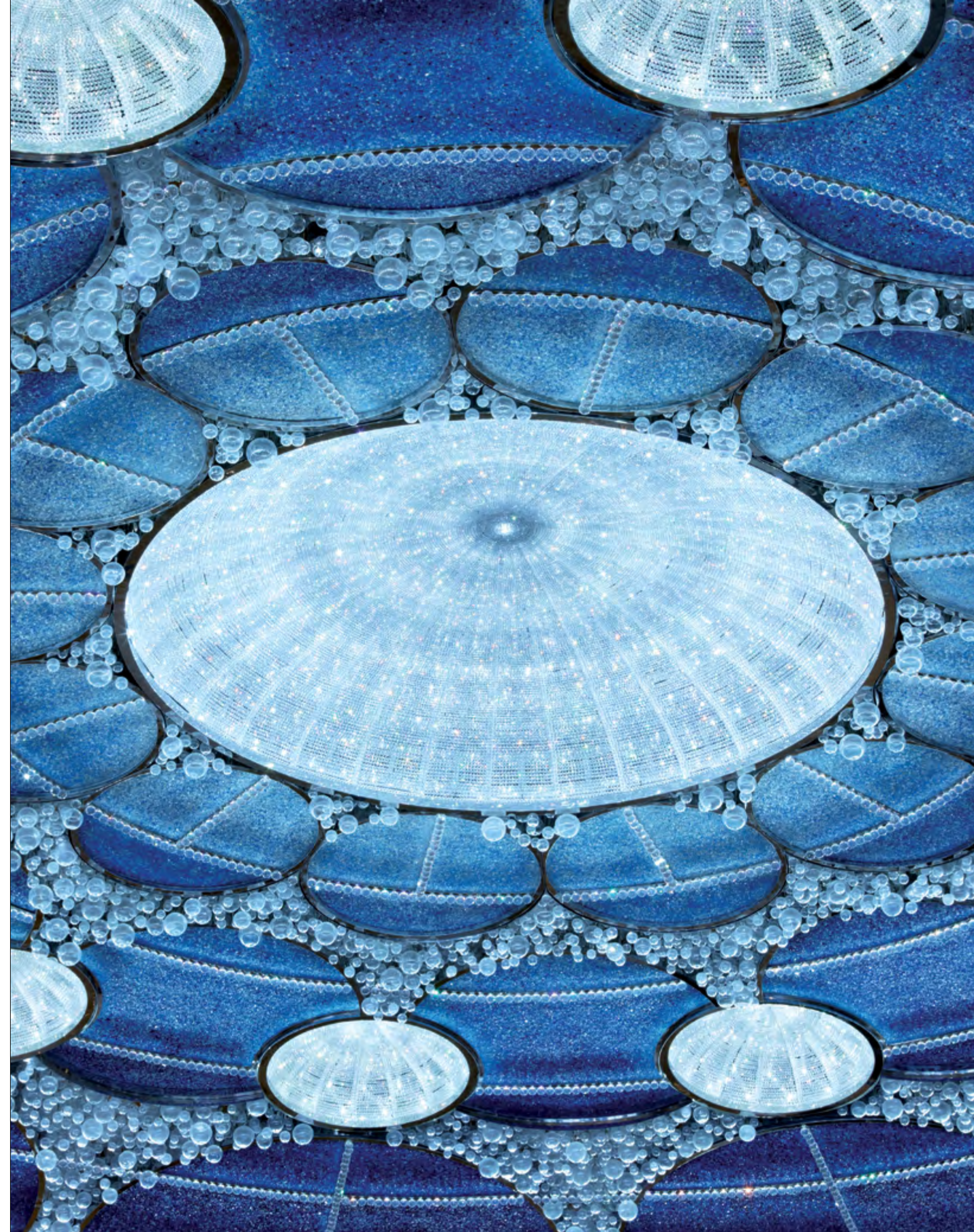
**JUMEIRAH AT ETIHAD TOWERS  
ABU DHABI**

**As the first Jumeirah hotel to pop up in Abu Dhabi, Etihad Towers features smart architecture with innovative style and design perfectly suited to such a chic city. This luxurious property sits on the Arabian Gulf. In Etihad Towers, Lasvit's crystal and glass art lighting creations adorn the Ballroom, Grand Lobby, and Pre Function.**

**Oculus**

Located in the Pre Function of the Etihad Towers is Oculus — an architectural lighting sculpture made of handcrafted crystal and hand-blown glass components. Oculus weighs an impressive 12 tons in all, consisting of more than 250,000 crystal components and 12,800 artistic hand-blown glass components. Oculus goes far beyond normal glass art and lighting installations. The Oculus' final diameter is 16 meters and the installation of the design required 12 weeks.

Special Thanks to /  
Interior Designer / DBI Design  
Lasvit Product Designers / Tárna Dvořáková, Bahaa Ghorab of Sheikh Suroor  
Projects Department and Anna Goh of DBI Design  
SSPD









## MANDARIN ORIENTAL BODRUM

Located in the aptly named Paradise Bay of Bodrum Peninsula, the Mandarin Oriental enjoys views of two private sandy beaches, supplemented by four interconnected outdoor pools. Apart from 59 guest rooms and 23 stylishly designed apartments, the complex offers 27 spacious suites including two outstanding Presidential Villas. While Mandarin Oriental brings its Eastern flare and signature wellness treatments, the design of the facilities resonates with local Turkish style in a bold contemporary approach.

### Weave

The innovative installation of the Weave sculptures makes use of Lasvit's occasionally overlooked craft — metalwork. This design allowed Lasvit's master metal smiths, usually producing support structures for glass elements, to show their skills. The concept is built upon the repetition of a single pattern, as if weaving a basket. Yet the loose structure gives the 250 kg pieces a surprising sense of openness and lightness, underpinned by LED lighting. Following the spirit of traditional Turkish lanterns, the sculptures create an intriguing filigree of shadow patterns in the lobby interior.

Special Thanks to  
Interior & Product Designer / Antonio Citterio Patricia Viel and Partners  
Astaş Holding





MANDARIN ORIENTAL  
LI FENG RESTAURANT  
JAKARTA

Mandarin Oriental, Jakarta is located in the financial and diplomatic district, overlooking the iconic Welcome Monument and the city's skyline. Renowned for its Indonesian hospitality and service, the five-star luxury hotel offers exemplary personalized service in luxurious surroundings. A new addition to its award-winning restaurants and bar concepts is Li Feng, a fine Cantonese restaurant located on the second floor, offering a main dining area, as well as three elegant and distinctive private dining rooms.

The Beacon

The installation is composed of oversized cut-crystal rods with a pattern highlighting the prismatic effect of fine cut crystal.

Across the Sea

The main dining area features Across the Sea, a stunning 10-meter-long glass installation. Amber-colored glass elements evoke stylized ancient junk sails with a sense of sunset. A black metal frame reflects the whole scene, creating a mysterious and dreamy atmosphere.

Special Thanks to

Interior Designer / LRF Designers Limited  
Lasvit Product Designer / Michaela Mertlová  
PT. Jaya Mandarin Agung









## PALAZZO VERSACE DUBAI

A less than 15-minute drive from the Dubai airport to the heart of the Culture Village brings you to a luxury hotel reminiscent of a 16th-century Italian Palace — Palazzo Versace Dubai. Its Neoclassical style, with touches of Arabian architecture, features a striking entrance, high ceilings, landscaped gardens and a range of well-crafted Italian furnishings. From tiles, lights and railings to fabrics and tableware — everything is designed and tailor-made by the House of Versace, carrying their signature patterns and the understated opulence symbolic of a Versace lifestyle.

### Golden Breeze

The layout of the amber-tone and crystal-clear elements of Golden Breeze is based upon a classic Versace floral pattern. It is designed to appear as if moved by a soft breeze, bringing delicacy to a 3000 kg work of hand-blown glass. Placed prominently above the central floor mosaic, the subtle elegance of this lighting sculpture supplements a surprisingly restrained lobby design, welcoming guests to a rich and unforgettable space.

Special Thanks to  
Interior Designer / House of Versace, Milan  
Lasvit Product Designer / Katarína Kudějová-Fulínová  
ENSHAA





## PULLMAN KAIFENG

Kaifeng is especially known for its love of chrysanthemums. The tradition of cultivating these plants goes back to the fifth century AD and, since 1983, there have been regular chrysanthemum festivals where people from all over the world can feast their eyes on their myriad color variations and composition. And you can find one of the biggest of these blossoms in the Pullman Hotel.

### Gentle Rain

The lighting sculpture in the hotel lobby provides the sensation of gentle rain, the life blood of any successful gardening project.

### Chrysanthemum

The installation comprises of five various perspectives on the chrysanthemum blossom, the largest of which is a full eight meters in diameter.

---

### Special Thanks to

Interior Designer / LTW Design Works Beijing  
Lasvit Product Designer / Chrysanthemum / Tárna Dvořáková  
Lasvit Product Designer / Gentle Rain / Jana Růžičková









## RENAISSANCE PHOENIX / DOWNTOWN

Vibrant Phoenix, the capital and most populous city of the U.S. state of Arizona, is home to the beautiful Renaissance hotel. Designed by Loewen Design Group, it features several of Lasvit's collections incorporated into the venue's contemporary interior.

### Growing Vases

Nendo and Lasvit collaborated to create an art piece that conveys the quixotic appeal of glass as derivative and incomplete, yet provides a breath of fresh air and opens new possibilities. The principle of a flower and a vase here is turned upside down. By turning the pipes into the flowers and branches and blowing the glass into a vase, suddenly the vases bloom from flowers instead of flowers blooming in vases!

### Facet

As if trying to systematize the chandelier-making tradition, Moritz Waldemeyer took the geometrical shape of the Classic chandelier outline and turned it into a diamond-like hexagonal glass unit. On its own, with just a single pendant, or in combination of multiple items into a large chandelier, the FACET components stand out as clear, disciplined and geometrical.

### Fungo

The Fungo chandelier was inspired by the fascinating shape of a mushroom growing on wood. Yet this mushroom didn't grow in the forest, but was originally discovered in the basement of Lasvit's glassworks. The Campana brothers chose to blend this newfound accidental theme with Lasvit's glassmaking tradition and fuse their techniques with natural materials.

---

### Special Thanks to /

Interior Designer / Loewen Design Group  
Lasvit Product Designer / Facet / Moritz Waldemeyer  
Lasvit Product Designer / Fungo / Campana Brothers  
Lasvit Product Designer / Growing Vases / Nendo  
Cohn Family









ROSEWOOD  
ABU DHABI

Inspired by the glistening Arabian Gulf, the luxurious Rosewood Abu Dhabi hotel celebrates peerless service and extravagance in the United Arab Emirates. Its sophisticated design is juxtaposed with comfortable furnishings and flowing fabrics in warm colors, reminiscent of a local souk, an open-air marketplace. Offering restaurants, superb shopping and stunning views of the water, the Rosewood hotel complex caters to a sophisticated business and leisure clientele.

Seaweed Wall

The Reed Wall in the lobby is a stunning installation of hand blown kiln-glass, inspired by the weave of reed partition walls. Its horizontal elements evoke seashore grasses, woven horizontally, gradually thicker, with deeper red tones near the base, then orange and yellow nearing the top, evoking a mood of sunset on the seashore.

Special Thanks to

Interior Designer / BBG-BBGM New York  
Lasvit Product Designer / Jitka Kamencová Skuhravá  
Mubadala





## SAKE NO HANA RESTAURANT LONDON

London's Sake no Hana Restaurant by Hakkasan provides a peaceful setting with classy décor and exquisite Japanese cuisine. Located in the center of London, Sake no Hana is in close proximity to the shopping district as well as the Ritz Hotel and other attractions. Like the ideal finishing to a remarkable interior design, Lasvit's Bamboo Forest glass art lighting sculpture brightens the restaurant's bar as well as the mood.

### Bamboo Forest

This vibrant green glass art installation, Bamboo Forest, resembles tubular bamboo shoots growing downward in varying lengths. Each individual bamboo shoot has its own shape and style, offering natural curves in a beautiful, organic green hue. The Bamboo Forest enhances the bar's atmosphere with the illusion of a bamboo wall.

---

### Special Thanks to /

Lasvit Product Designer / Jitka Kamencová Skuhravá  
Interior Designer / Hakkasan  
Cha Cha No Hana





## SHANGRI-LA MANILA

The Shangri-La at the Fort in Manila is a five-star luxurious sanctuary for both business and leisure travelers. Located in a landmark mixed-use complex allows guests to stay, relax, dine, shop, work out and play in one of the tallest buildings in the Philippines. Lasvit cooperated with interior designer HBA to create stunning, jewel-like installations for the building's lobby, ballrooms, and lounge.

### Lobby & Lounge Area

The Lasvit Lobby & Lounge area pieces, designed by Katarína Kudějová-Fulínová, are inspired by traditional jewelry. The lighting sculpture cascades from the ceiling of the Shangri-La hotel lobby and is inspired by a traditional broche design, but further innovated in a way which appeals to the cosmopolitan design tastes of a modern world. The Lounge Area piece is the inverted version of the same idea.

### Gem

This lighting sculpture, located in the ballroom, used thousands of hanging crystals dripping from above as lighting, said to be reminiscent of intertwined crystal necklaces. The overall shape is inspired by the shape of the cloud used in Asian drawings.

### Special Thanks to

Interior Designer / HBA Atlanta  
Lasvit Product Designer / Lobby & Lovvy Lounge / Katarína Kudějová-Fulínová  
Lasvit Designer / Gem / Táňa Dvořáková  
Shangri-La









## SO SOFITEL SINGAPORE

Each Sofitel hotel offers a unique experience and, just like its counterparts around the world, Sofitel So Singapore offers a standard of French luxury blended with the best of local culture. The heritage building houses pioneering design and services, elegantly fusing timeless elegance with modern Singapore chic. 134 meticulous rooms and 9 suites sport innovative services, style and technology while the golden rooftop pool offers stunning views of the city.

### Hexagon

The atrium lobby of Sofitel So Singapore is adorned with 70 hexagons inspired by the classic honeycomb design. The stainless steel frames have a mirror finish that reflects internal dynamic LED lighting. The hexagons are filled with a filigree of cut crystal beads intricately woven into honeycomb patterns.

Special Thanks to  
Interior Designer / Miaja Design  
Lasvit Product Designer / Tomáš Hovorka, Jana Růžičková, Táňa Dvořáková  
Royal Group







104



105



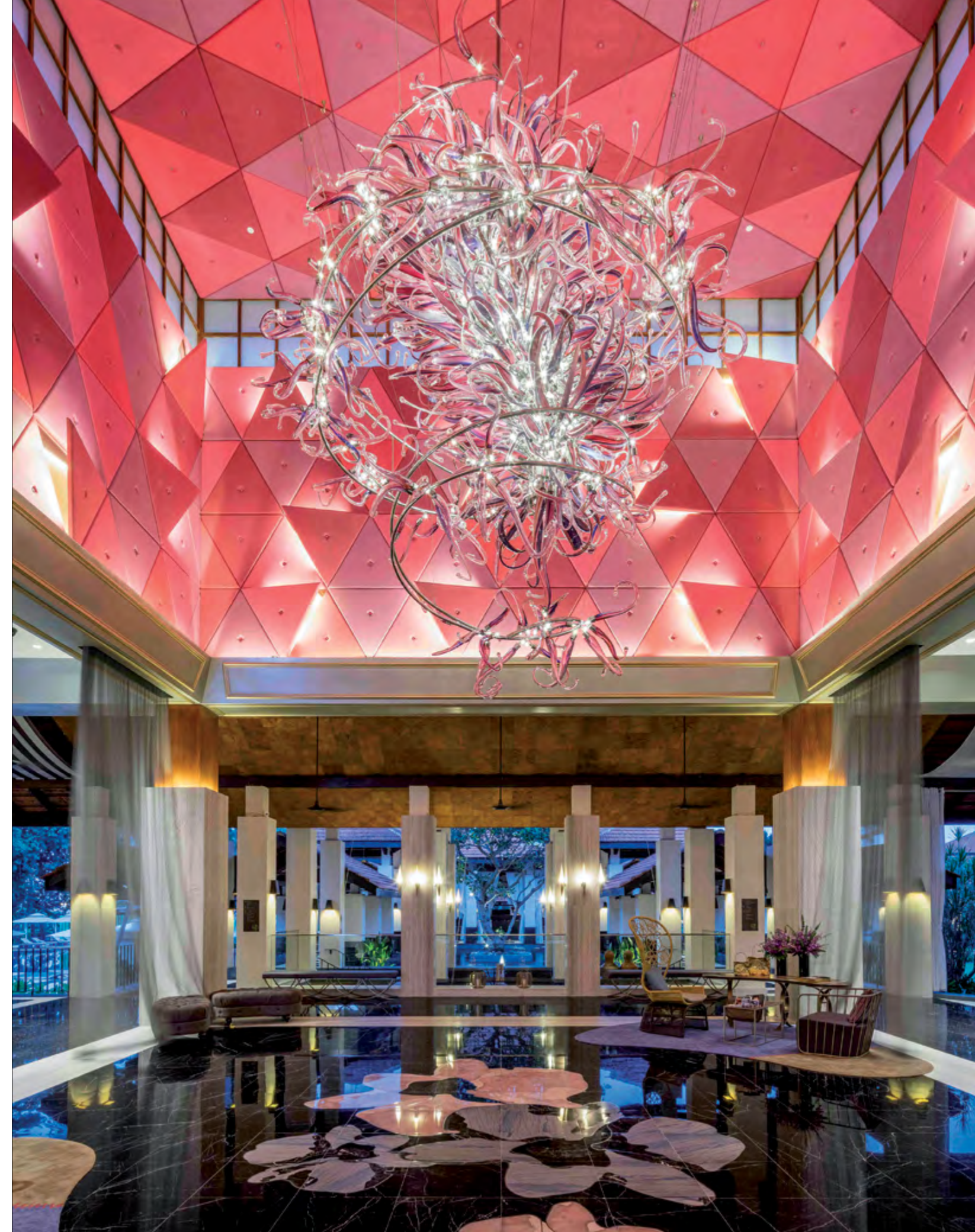
## SOFITEL SENTOSA RESORT & SPA SINGAPORE

Sofitel Sentosa Resort and Spa boldly proclaims that “Life is magnifique in Singapore.” This French-based five-star resort is located on Singapore’s Sentosa Island, at the top of a cliff that towers above Tanjong Beach. Visitors to this haven of tranquility and relaxation enjoy a friendly casual atmosphere that blends French chic with a truly Gallic sense of luxury. Naturally, it offers stunning views of sunsets on the horizon. The property, with its lush surroundings set in a tropical garden, contrasts a playful mix of styles inside — some bold and daring, some subtle and clearly showing their modern Asian influence.

### Stellar

Inspiration for the Stellar lighting sculpture sprang from the two main sources. The first is the gravitational attraction holding billions of stars together within spiral-shaped galaxies, much like our own galaxy – the Milky Way. Its significant central core references a French naturalist style with its organic and floral patterns. The complex combination of clear, violet, blue, opal and frosted crystals evidences the craft mastery of Lasvit glass-makers and the versatility of hand-blowing techniques.

Special Thanks to  
Interior Designer / M.A.X STUDIO and ToineinBangkok  
Lasvit Product Designer / Luděk Hroch  
Royal Group





Nicknamed after its Las Vegas inspiration, the Cotai Strip experienced ten years of rapid development and became a favored destination for world-class tourism. St. Regis is a fully integrated destination resort that includes premier shopping, dining and entertainment facilities. It raises the bar in luxury hospitality with the brand's signature butler service and refined elegance.

Crystal Veils

The St. Regis lobby is lit by a unique lighting sculpture that creates an open, airy atmosphere. The layers of clear glass resemble veils and appear ready to move in a breeze. The individual components were created with the slump-glass technique, in which liquid glass fills hand-sculpted forms.

Special Thanks to

Interior Designer / Wilson Associates Dallas  
Lasvit Product Designer / Libor Sošťák  
Sands China





## THE LANGHAM CHICAGO

The Langham Hotel in Chicago is located in one of the city's most famous downtown riverfront landmarks — the 52-story Ludwig Mies van der Rohe-designed building at 330 N. Wabash Avenue. Lasvit's in-house designers Jana Růžicková and Tomáš Hovorka, in collaboration with London's Richmond International, have developed two elegant and expansive glass art installations. The installations in The Langham Chicago draw a connection to Czech tradition not only through Lasvit and their designers, both of whom are Czech, but also through the Mies van der Rohe-designed building that houses them.

### Pebble Stones

The installation is comprised of hand-blown glass pebbles in two sets of colors, which are suspended at varying distances and lit from above with LEDs. The bubble-like pebbles are individually unique in shape and internally coated in liquid metal, thereby referencing water formations and creating a reflective, mirror-like effect. As visitors move away from the river, located closest to the reception area, and towards the Pavilion, the colors of the glass pebbles shift from blues and silvers to bronzes and coppers. Photo by Mike Schwartz

### Special Thanks to

Interior Designer / Richmond International London  
Lasvit Product Designer / Jana Růžicková, Tomáš Hovorka  
Champion Global Services Ltd.









## THE PENINSULA HONG KONG

The Peninsula Hong Kong is an internationally renowned five-star hotel and has been an integral part of the local community since 1928, combining both modern and colonial aspects. The Peninsula is a living legend, the name synonymous with luxury, comfort and impeccable service. Lasvit lighting sculptures perfectly complement the interiors of The Verandah Restaurant, as well as the singular and luxurious Presidential Suite.

### Whirlpool

Lighting sculpture inspired by the dynamic shape of a whirlpool. It is composed of handmade metallurgical components. The components themselves are designed to create an organic impression and a hue of glass corresponding with the color of the interior.

### Bird Flocks

The Presidential Suite of the Peninsula is likely the most luxurious hotel suite in Hong Kong, with stunning views of the entire Hong Kong Island. Designer Libor Sošťák enhanced the elegant and soft interior design with a lighting sculpture so open and airy it resembles a flock of birds in the air. Spanning nearly 10 meters, its hand-blown glass spiral elements gradate from clear crystal to mica finish to delicate amber hues. This organic sculpture exemplifies modern glass at its most elegant.

### Special Thanks to

Interior Designer / Zanghellini & Holt Associates  
Interior Designer / Presidential Suite / The Gettys Group  
Lasvit Product Designer / Libor Sošťák  
The Hong Kong and Shanghai Hotels, Ltd.







116

117



## THE PENINSULA PARIS

The Peninsula Paris, which first opened as the Hotel Majestic in 1908, is located in a late 19th-century classic French building with Haussmann and Neo-Classical features.

The property has subsequently been meticulously restored and discreetly modernized for the 21st-century. At 19 Avenue Kléber, just steps away from the Arc de Triomphe, The Peninsula is located in the very heart of Paris.

### Dancing Leaves

Within a classical hotel lobby, there is the sudden impression of motion, as if a gust of wind scattered a drove of leaves which the approaching winter froze in their place, forever suspended in the chilly air. Hundreds of tiny, meticulously rendered originals, frozen in time and space, give an immensely refreshing vibe to the hotel's chic interior.

---

Special thanks to  
Designers Henry Leung, Luděk Hroch  
Interior Designer / Chhada Siembieda Leung  
The Peninsula Hotel













## THE WESTIN DENVER / AIRPORT

The Westin Denver International Airport Hotel is a modern, convenient sanctuary for both business and leisure travelers to Denver. The hotel is part of its new Hotel and Transit Center, which also comprises an outdoor plaza and a public transit center with rail service to downtown. Building upon an imagery of flight and aviation, the sleek design of the hotel resembles a bird with its wings extended, hovering above the public plaza, framing and accenting the acclaimed tents of the Jeppesen Terminal.

### Zephyr

This lighting sculpture embodies movement of air in a geometric way. Its hand-blown glass components “rotate” around the center of the glass art piece and enhance the illusion of movement, the main theme of the piece.

### Special Thanks to

Interior Designer / Gensler Los Angeles  
Lasvit Product Designer / Zephyr / Katarína Kudějová–Fulínová  
Denver International Airport — City and County of Denver c/o The Parker Company





R  
S  
D  
E  
E  
E  
I  
N  
N  
C  
S



## CHATEAU MONTFERRIER PÉRIGUEUX

Montferrier is located in the “Périgord Noir,” about 20 minutes from the UNESCO medieval city of Périgueux in France. The castle was built at the beginning of the 17th-century as the property of two Périgordine aristocratic families. It was designed with modern classical interiors weaved with touches of French and Chinois influences, highlighted by Lasvit’s contemporary chandeliers. This sensitivity has resulted in an ambiance that is as relevant and comfortable as it is elegant.

### Growing Vases Installation

This extraordinary, playful lighting installation alludes to a whimsical glass forest filled with abstract flowers and branches. Metal pipes were used by glassblowers, still attached to the glass objects that they were used to make. By turning the pipes into flowers and branches and the glass into a vase, we literally turned convention on its head, making flowers blooming in vases into vases blooming from flowers to represent the flower bulbs that draw nutrients from plants through photosynthesis and store new life.

Special Thanks to  
Interior Designer / Alex Cho  
Lasvit Product Designer / Oki Sato, Nendo Inc









**DHAMANI RESIDENCE  
DUBAI**

**The Dhamani Jewellery is among the most respected and visited jewelers in Dubai. The family came from Jaipur and brought along their sense of style and luxury that resonated with Dubai clients, as well as the strong business ethic that has kept the company prosperous since 1969.**

**Precious Drops**

The family dining area opens to the multi-level lighting sculpture Precious Drops by Jana Růžičková. The designer took her inspiration from precious metals used in jewelry, namely in their melted liquid state.

**Bejeweled Queen and Bejeweled Princess**

Two bespoke installations designed by Lasvit internal designer Katarína Kudějová-Fulínová adorn the main entrance. Titled Bejeweled Queen and Bejeweled Princess, the sculptures are inspired by the Dhamani Jewelry, as well as patterns corresponding to other décor in the interiors.

**Special Thanks to**

Interior Designer / Callison RTKL  
Lasvit Designer / Bejeweled Queen and Bejeweled Princess / Katarína Kudějová-Fulínová  
Lasvit Designer / Precious Drops / Jana Růžičková  
Dhamani Family







134



135



PRIVATE RESIDENCE  
BEIRUT

Beirut is one of the New7Wonders Cities, which are cities considered to best represent the aspirations of a modern, urban world. At the same time, it is one of the oldest cities on the planet, and its streets thus carry both the wisdom of the past, as well as the prospects of a budding modernity. The falling glass leaves which hang above the residence's dining room table reference the passage of time, and whisper of a blooming future.

Dancing Leaves

Luděk Hroch's installation in the residence's dining room is inspired by traditional French aesthetic, as it is modeled on a Lasvit piece which hangs in The Peninsula Paris, but here transposed to a fresh new context.

Special Thanks to  
Interior Designer / Bleu Design  
Lasvit Product Designer / Luděk Hroch





PRIVATE RESIDENCE  
KOLKATA

Throughout the past century, Kolkata has been a cultural center, one where art, life, and beauty have been intermingling in myriad unforeseen ways. Rony Plesl's installation Uovo resembles an egg which mirrors its surroundings, changing the interior through tasteful artifice and scattering a thousand reflections of patterned light. Which came first — the beauty or the egg?

Uovo

Like something from a fairytale, UOVO sparkles with the mystical radiance of faraway lands. This reflective sculpture looks like a spawn of precious rounded mirrors, capturing the light from surrounding objects and reflecting them back, but further changed and sublimated by the integrated LED lights.

Special Thanks to  
Lasvit Product Designer / Rony Plesl  
Interior Designer / Pinakin





## PRIVATE RESIDENCE LONDON

Aside from the city's largest concentration of five-star hotels, London's Mayfair area is known for former homes converted into offices for major corporate headquarters, embassies, financial and real estate companies. Mayfair Residence is an unusual case of a former office building now turned into a seven-floor private residence, including a basement and roof terrace, right in the center of Mayfair. Katharine Pooley's redesigns of this Grade II listed property included extensive building works, a glass lift shaft, bespoke lighting, hand-painted and embroidered wallpapers as well as seven bathrooms and a white onyx spa.

### Stream

This unique light sculpture streams through the entrance hall with a delicate natural flow. It spans over eight meters and gently winds around the stairwell with its unique glass elevator shaft. The effect is emphasized by an oversized mirror reflecting the stream of crystal clear and blue hand-blown glass elements. The sculpture is attached directly to a suspended ceiling, rather than a metal plate, adding an organic feel to the space and drawing attention to its reflections in surrounding glass surfaces.

Special Thanks to  
Interior Designer / Katharine Pooley London  
Lasvit Product Designer / Petra Krausová





## PRIVATE RESIDENCE SURABAYA

Commissioned for a private residence, Golden Summer's design elements are composed of yellow, orange and brown-tinted hand-blown glass, arranged in waves. It mirrors the dichotomy of blending the modern and traditionally lush natural features typical of Surabaya. Golden Summer evokes that short period when summer, still warm and sunny, merges into fall.

### Golden Summer

Nature collides with modernity in Surabaya, the Indonesian 'City of Heroes,' in a unique mix. Petra Krausová's Golden Summer lighting sculpture, commissioned for a private residence and made from yellow, orange and brown-tinted hand-blown glass, reflects this dichotomy. It transports the viewer to the short period of time when summer, still warm and sunny, changes into fall.

---

Special Thanks to  
Lasvit Product Designer / Petra Krausová









## THE RITZ-CARLTON RESIDENCES SINGAPORE

The Ritz-Carlton Residences are conveniently located in the heart of the vibrant shopping district of Orchard Road. Perched on higher ground, every apartment is bestowed with spectacular city views which, combined with The Ritz-Carlton experience, provide the ultimate in luxury living. The 36-story Ritz-Carlton Residences stand on almost 60,000 square feet of land, with three sky terraces housing extensive fitness, entertainment and service facilities for the residents.

### Peony

The ruffled yet elegant petals of oriental peonies inspired this unique lighting sculpture, installed in a private residence in Singapore. Lasvit designer Táňa Dvořáková evoked her signature concept of Twill, a flexible fabric-like texture composed of thousands of handmade cut-crystal beads, to create the open and organic structure of the flower. The result follows the modern, minimalistic feel of the interior, yet adds a distinct sense of luxury with myriad colorful light refractions.

Special Thanks to  
Interior Designer / LTW Design Works, Singapore  
Lasvit Product Designer / Táňa Dvořáková





D V E E  
L V O P  
M E  
N T S



## ONE PARK GUBEI SHANGHAI

The One Park Gubei project is the most luxurious residential development in Shanghai. There are eight apartment blocks in the project. Lasvit provided lighting sculptures for each block's Main and Underground Lobby, starting with blocks 6 and 7, which house showcase apartments with additional Lasvit sculptures. The development also includes villas, a clubhouse and access to a golf course.

### Flounces

The Main Lobby installations at the One Gubei Park apartment blocks feature nearly three-meter tall lighting sculptures by Katarína Kudějová-Fulínová. Their four layers of hand-blown crystal tubes in amber and clear colors are gently draped, much like flounces on a skirt. Each tubular segment is hand-shaped to create subtle curves, further underlined by the overall flower-like design.

### Glass Maze

Designer Daniel Jaček created a fascinating installation for the underground Lobby spaces of the One Gubei Park buildings. The two-meter high sculpture consists of glass plates with an etched pattern, set in a mounting with a rosy-gold mirror finish. Viewed from below, the narrow glass sheets create a maze-like pattern.

### Special Thanks to

Interior Designer / MEGO Shanghai  
Lasvit Designer / Founces / Katarína Kudějová-Fulínová  
Lasvit Designer / Glass Maze / Daniel Jaček  
Wealine International









## REIGNWOOD PINE VALLEY GOLF CLUB BEIJING

Just a stone's throw away from the resting place of the exalted Ming dynasty, and a mere hour's drive from the Great Wall of China and the Forbidden City stands this unique, private golf club. Playing on its greens is one of the most prized experiences any avid golfer can hope for, and the history on which it is built can also be traced in the wondrous decor of the resort's lobby.

### Duogong

The resort's lobby is adorned with a red chandelier, made by Libor Sošťák, whose design was inspired by the dougong, perhaps the most iconic feature of ancient Chinese architecture. The ancestral style reminds even the most downtrodden golf player that the road of history is not only littered with spectacular wins, but also with necessary, somber defeats.

Special Thanks to  
Interior Designer / Reignwood Daye Design  
Lasvit Product Designer / Libor Sošťák  
Reignwood Group









## RIHAN HEIGHTS ABU DHABI

Rihan Heights is a venue comprised of five residential towers featuring charming sights and attractive villas nearby. This complex is located on the corner of Arzanah, a beautiful community by Capitala developers. The Rihan Heights towers contain 854 apartments ranging from one to three-bedroom duplex penthouses. Lasvit designer Luděk Hroch comes with the perfect finishing touch to this luxurious complex with his six extraordinary glass art installations expressing the Earth's Elements.

### Elements

Fire, earth, water, wood and metal inspired Lasvit designer Luděk Hroch to eternalize them in his lighting installations called Elements. There is one lighting piece in each of the towers, each evoking one of the elements of nature. In the center of Rihan Heights, in the Clubhouse, another art piece by Luděk Hroch embellishes the ceiling. This sculpture represents a combination of all five colors — the joining of all five of the Earth's Elements at once.

---

Special Thanks to  
Interior Designer / Sparch  
Lasvit Product Designer / Luděk Hroch  
Mubadala Capitaland Real Estate L.L.C.





SKY  
NEW YORK

Sky is a luxurious 71-storey tower with public spaces, amenities and residences designed by Rockwell Group. Developed by The Moinian Group, the building is located at the nexus of two dynamic neighborhoods, Hell's Kitchen and Hudson Yards, just a few blocks away from world-class theaters, restaurants, the High Line, Hudson River Park and West Chelsea's art galleries.

Gravity

Lasvit was commissioned to create a custom-made lighting installation for the building's lobby. Called 'Gravity,' the installation, created by Lasvit in-house designer Ludmila Žilková together with Rockwell Group, is inspired by the physical phenomena of gravity. Weighing approximately 1543 lbs and with a height of 8 ft, the structure is composed of glass 'cells,' sorted and linked to create one entire structure whose shape appears weighted down by gravity.

Special Thanks to  
Interior Designer / Rockwell Group  
Lasvit Designer / Ludmila Žilková  
The Moinian Group





## TAIKOO PLACE APARTMENTS HONG KONG

Taikoo Place is one of Hong Kong's best-planned business hubs. This new development is surrounded by a vibrant fusion of commerce, entertainment and culture. The interiors showcase an understated palette of warm color tones to create an atmosphere of modern comfort. The New York-based Richardson Sadeki designers are renowned for their versatility, reaching from interiors to graphics and fashion and this holistic imprint clearly shows.

### Petal Path

The entry to the Taikoo Place Apartments tower is lined with petals — or at least that's the impression from this unique lighting sculpture, composed of gently shaped glass. The amber and smoke tones fade into opaque and clear glass which support the earthy palette of the interiors. Each hand-blown element is individually shaped, adding to the organic feel of a sculpture that perfectly contrasts with the minimalist interior.

---

Special Thanks to  
Interior Designer / Richardson Sadeki  
Lasvit Product Designer / Adam Kohout  
Swire Properties





C O M  
M E  
R  
C I L  
A L



**133 Wai Yip Street opted for an entirely see-through office, aiming at ultimate transparency within the workplace. This includes its functional technical components, such as glass lift shafts and interior furnishings – glass tables, shelves, floors, speakers, computers and walls. It's an entire glass office, free of visual clutter.**

The Concurrency

Among its striking features is a magnificent new chandelier that greets visitors as they enter the building. The lift lobby features a dynamically-lit glass sculpture titled The Concurrency produced by Lasvit, the Czech designer and manufacturer of bespoke glass installations and designer lighting collections. This is our first project in which the intricate ceiling cable system is intentionally exposed as part of the design. It creates a spider-like composition that resembles the printed circuit boards familiar from electronics.

---

Special Thanks to  
Interior Designer / Winy Maas (MVRVD)  
Lasvit Product Designer / Jana Růžičková  
Gaw Capital









540 WEST MADISON  
CHICAGO

Lasvit has created beautiful glass art installations for the prestigious office building at 540 West Madison, Chicago. The dominant features of the Atrium lobby and mezzanine of 540 West Madison, Chicago are two impressive glass art sculptures going by the name of “Light Twister,” created by Lasvit's in-house designer Libor Sořt'ák. His designs were inspired by dynamic movement symbolizing growth and rapid development.

Light Twister

The “Light Twister” installations are created from hand-blown organic crystal elements which use a variety of artistic techniques. Each of the artistic glass sculptures is created from more than 2000 hand-blown components in various shades of blue in combination with silver and clear opal. To underscore the impression of dynamic movement, lighting elements were placed inside certain components. Overall, the glass art sculptures reach impressive dimensions: the sculpture on the mezzanine has dimensions of 28.5 meters in length and 5 meters in width; the sculpture in the lobby has a height of 9.2 meters and a width of 5.4 meters.

Special Thanks to  
Lasvit Product Designer / Libor Sořt'ák  
540 West Madison Holdings LLC









## KERRY CENTRE OFFICE TOWER BEIJING

Beijing Kerry Centre's prime location in the heart of the Central Business District puts you right at the doorstep of mainland China's commercial activity. Everything you need for maximum productivity is located under one roof, at one attractive, highly visible address. Lasvit's illuminated sculpture embellishes the lobby of this tower.

### Sunset

This volume of plastic is created by a network of glass sticks which is made of two stems weaving in and out of each other. This light catches the unique moment when day transforms into night.

### Special Thanks to

Interior Designer / BTR HK Limited / Kerry Properties (China) Ltd.  
Lasvit Designer / Katarína Kudějová-Fulínová  
Kerry Development (China) Ltd.





## LOTTE WORLD TOWER DIVER HALL SEOUL

Lotte World Tower is a 123-floor, 555-meter (1,821 ft) recently completed skyscraper located near the Han River. Its slender, cone-shaped structure with gently curved sides will contain retail outlets, offices and residences, as well as a luxury hotel and public-access floors with an observation deck. The exterior of pale-colored glass was inspired by Korean ceramics and features metal filigree accents.

### Diver

Likewise, the lighting sculpture draws its inspiration from the Korean culture and environment. Designer Maxim Velčovský, who also serves as Lasvit's Creative Director, designed the installation titled Diver, a seventeen-meter glass sculpture composed of thousands of hand-blown opaque glass spheres.

Special Thanks to  
Lasvit Designer / Maxim Velčovský  
Gana Art Gallery  
Lotte









180

181

lasvit.com





## OFFICE IN MAYFAIR LONDON

It is now common knowledge that having an inspiring workplace is just as important as having a pleasant home, and Jitka Kamencová Skuhrová's installation, titled *Mist*, inspires anyone and everyone who has the slightest eye for beauty. Standing in one of the most up-scale districts of London, the refined chic reflects the refined tastes of both its employees and its visitors.

### Mist

Taking the staircase next to which a graceful cluster of lighted glass components descends like a fragrant hyacinth blossom can brighten even the most manic of Mondays.

---

Special Thanks to  
Interior designer / DHA Designs  
Lasvit Product Designer / Jitka Kamencová Skuhrová





## OUE DOWNTOWN GALLERY SINGAPORE

The entrance to the OUE multifunction gallery is bathed in an aquatic, submarine glow. Such a soothing effect befits a place of mutual meeting and sharing among both friends and colleagues. In one of the world's busiest metropolises, moments of quiet repose are that much more essential to the visitors' well-being.

### Reflections

Designer Petra Junová takes most of her inspiration from natural phenomena, such as water currents and vegetation, a fact which is testified to in OUE Downtown Gallery's paneled installation.

---

Special Thanks to  
Lasvit Product Designer / Petra Junová  
OUE Limited





## PACIFIC CENTURY PLACE BEIJING

Pacific Century Place is located in the Changhong District, just east of Sanlitun, a stylish and vibrant neighborhood internationally renowned for shopping, art galleries, fine dining and luxury hotels. A central atrium connects two office towers and two apartment towers with elegantly appointed interiors and top-level amenities.

### Airflow

Lasvit designer Mária Čulenová Hostinová focused on a unique natural element — air. Her dynamic lighting feature named Airflow is suspended over the atrium, featuring fifty dynamically-lit handmade glass elements, each three meters long. While the glass components were produced using traditional glassmaking techniques in the Czech town of Nový Bor, the framing and light sources were developed in Shanghai.

---

Special Thanks to  
Interior Designer / Lead 8  
Lasvit Product Designer / Mária Čulenová Hostinová  
Gaw Capital





## QUADRIO PRAGUE

The new Quadrio center in Prague is a multipurpose building connected to the metro station and the neighboring My Národní Tesco shopping center. Quadrio is composed of six buildings: five office towers and an independently standing apartment building. Maxim Velčovský's glass installations in the office lobby deal with the topic of the spirit of the city, reminiscent of the buildings that once stood in this place. They disappeared over time, giving way to the city's infrastructure. The vestibule to National Avenue metro station was built in their place at the end of the 1970s and, thirty years later, Quadrio.

### Good Spirits

Glass sculptures in the shape of a horse, lion and shoe honor the spirit of the former buildings with the house signs of the Black Horse, the White Lion and the White Shoe. The Good Spirits are composed of more than 10,000 black and opaque white balls made by technical blowing methods. The largest piece is over three meters long. Additionally, the reception counter uses Lasvit's modular Hydrogene system, in this case seven unique glass panels decorated by hand with a wedge-shaped grindstone.

Special Thanks to  
Interior Designer / CMA Architects  
Lasvit Designer / Maxim Velčovský  
CPI Group





TIFFANY & CO., BELLAVITA STORE  
TAIPEI

Tiffany & Co. is well-known for its stunning creations of timeless beauty, outstanding craftsmanship and striking elegance. As the world's premier jeweler since 1837, Tiffany & Co. influences fashion each year, bringing glamour and groundbreaking designs to luxury connoisseurs. The interior design of the Tiffany & Co. Bellavita Store is graced with the presence of an impressive lighting sculpture design by Lasvit — Icefalls in Tiffany Teal. Elegant and graceful, this beautiful light structure captures the essence of Tiffany & Co.

Icefalls in Tiffany Teal

Cascading from the ceiling of the Tiffany & Co. Bellavita Store, the stunning lighting sculpture, Icefalls in Tiffany Teal by Jitka Kamencová Skuhravá, reflects the iconic sparkle of Tiffany's jewelry. Combining hundreds of delicate hand-blown icicles to form a sculptural piece of art, this stunning lighting sculpture boasts many hand-blown stalactites to create an original Lasvit design. Its ellipsoid shape depicts a conglomeration of melting ice, centered above a display of beautiful Tiffany jewels.

Special Thanks to

Interior Designer / Tiffany & Co. Inhouse Design Team  
Lasvit Product Designer / Jitka Kamencová Skuhravá  
Tiffany & Co.







192



193



N  
A U  
T I C  
L A



## MAJESTIC PRINCESS CRUISE SHIP

This Royal-class cruise ship prowls the seas with style and grace, and her tastefully designed interiors complement its royal status. But royalty must also be tasteful and subdued, without any trace of gaudiness. The interiors of the Majestic Princess leave no one guessing as to the true status of this Princess of the seas.

### Table Lumiere

Inspired by the Lasvit classic design "Twill," this lighting sculpture dominates the Table Lumiere area. This entangled combination of metal and crystal beads evokes sentiments of delicate wonder and charm.

### Oceanus

The streamlined textured glass and cobalt blue features of Jana Růžičková's Oceanus glass installations which compliment the ship's main hall directly reference the wide expanses of the ocean which the Majestic Princess Cruise Ship calls home.

### Special Thanks to

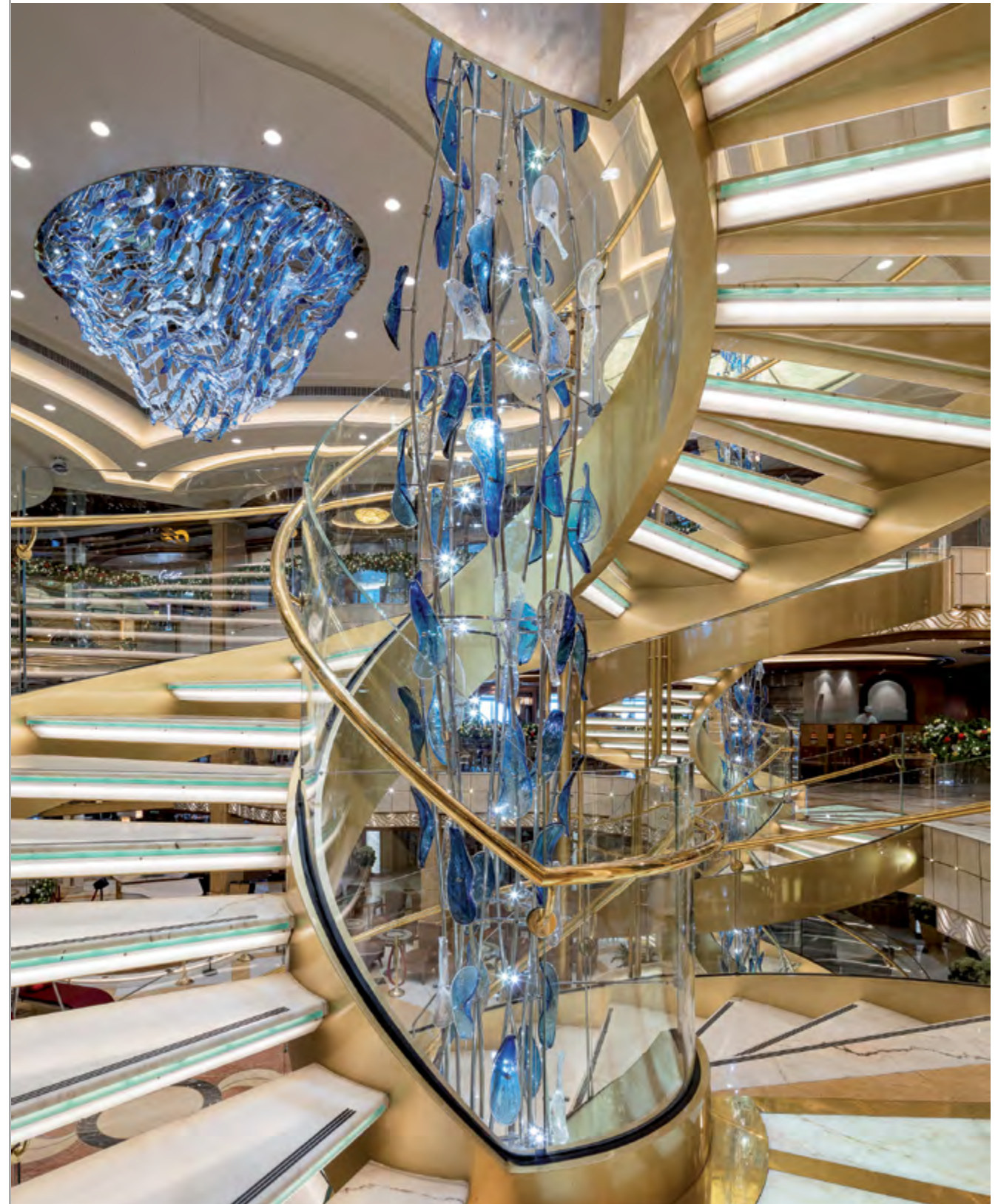
Lasvit Product Designer / Table Lumiere / Táňa Dvořáková  
Lasvit Product Designer / Oceanus / Jana Růžičková







198



199







A R C  
H I C  
T E C  
T U R E



## HYDROGENE

Hydrogene is the lightest and most abundant element in the cosmos, but that does not make it superfluous. The beauty of Kemper & Olah's series Hydrogene is just like that, allowing a simple, versatile chic to be transposed to any setting. The various shapes which the work conjures up are further accentuated by the integrated LED system which lights the panels in myriad original ways. Like blades of grass, complexity always arises from organic simplicity.

---

Designed by / Lars Kemper & Peter Olah





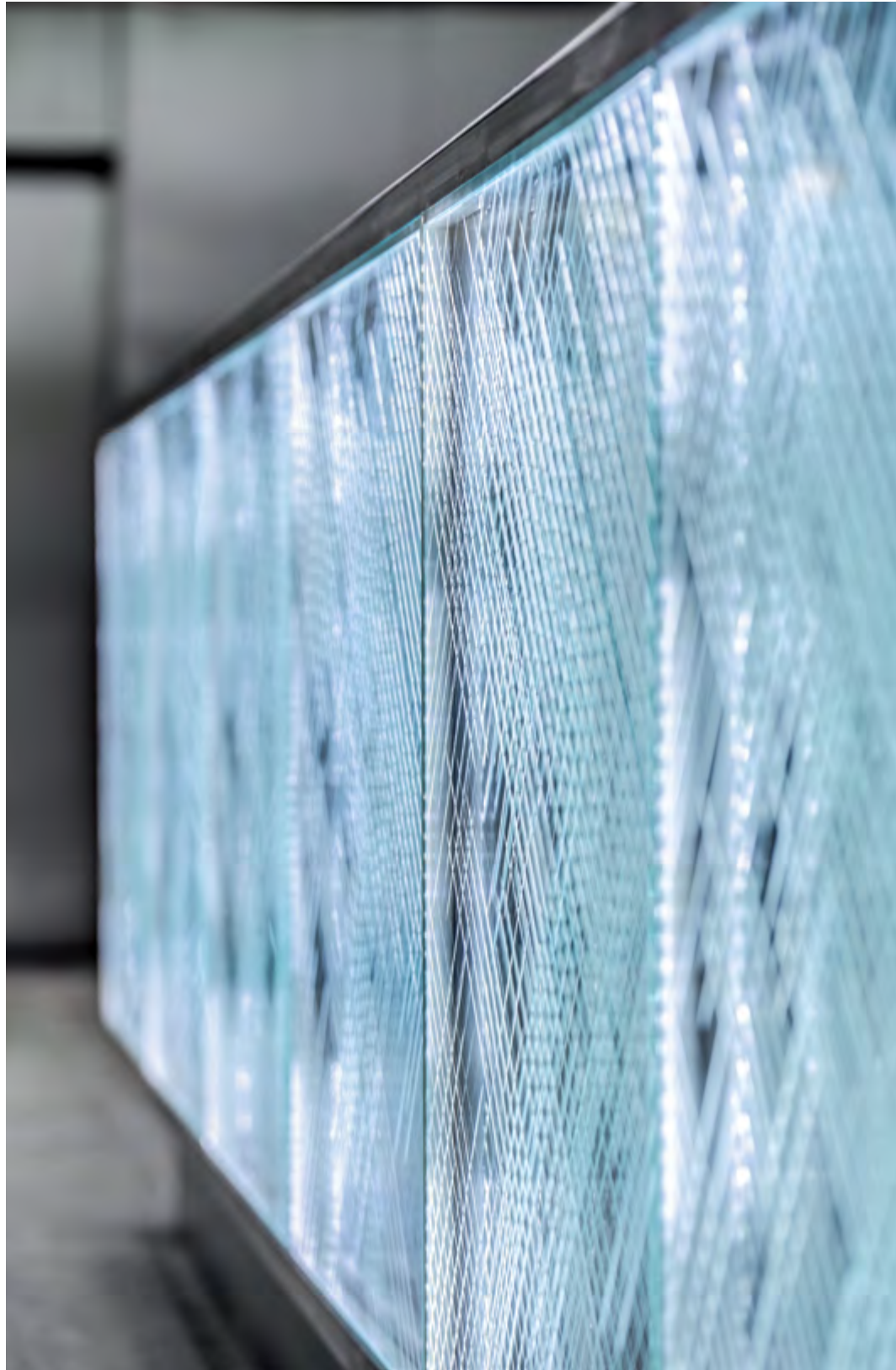


206

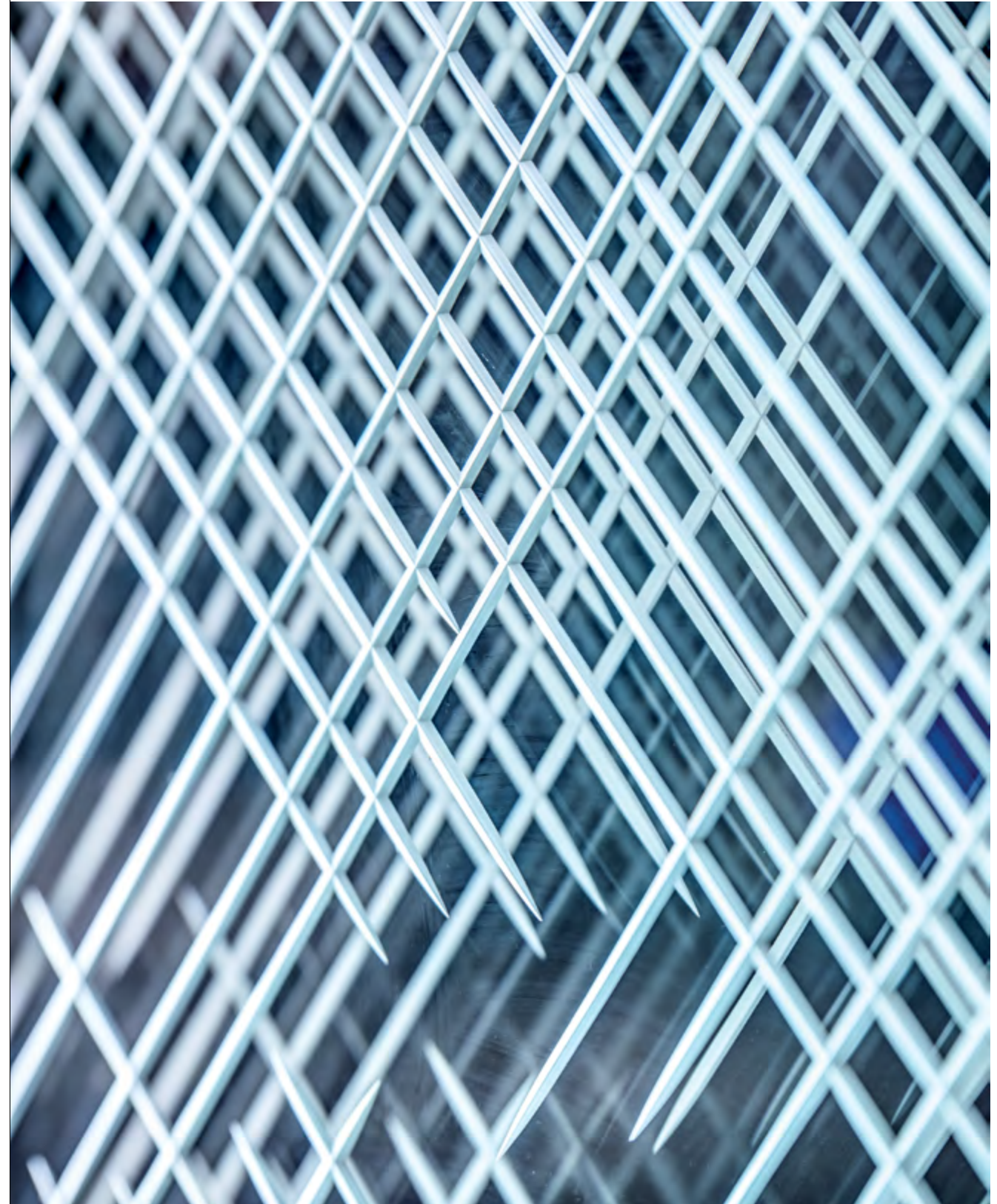


207





208



209



## LASVIT CRYSTAL WALL

Lasvit's Crystal Wall takes its inspiration from the architecture of the Czechoslovakian 1960s and 1970s, but updates it for the refined tastes of the 21st century. The versatility of the glass clip-in system means that the Crystal Wall can be used both as paneling, decoration or partition, and can furthermore be silver-coated, colored or clear, depending on the requirements of the interior where it is incorporated.

---

Designed by / Koncern Design Studio





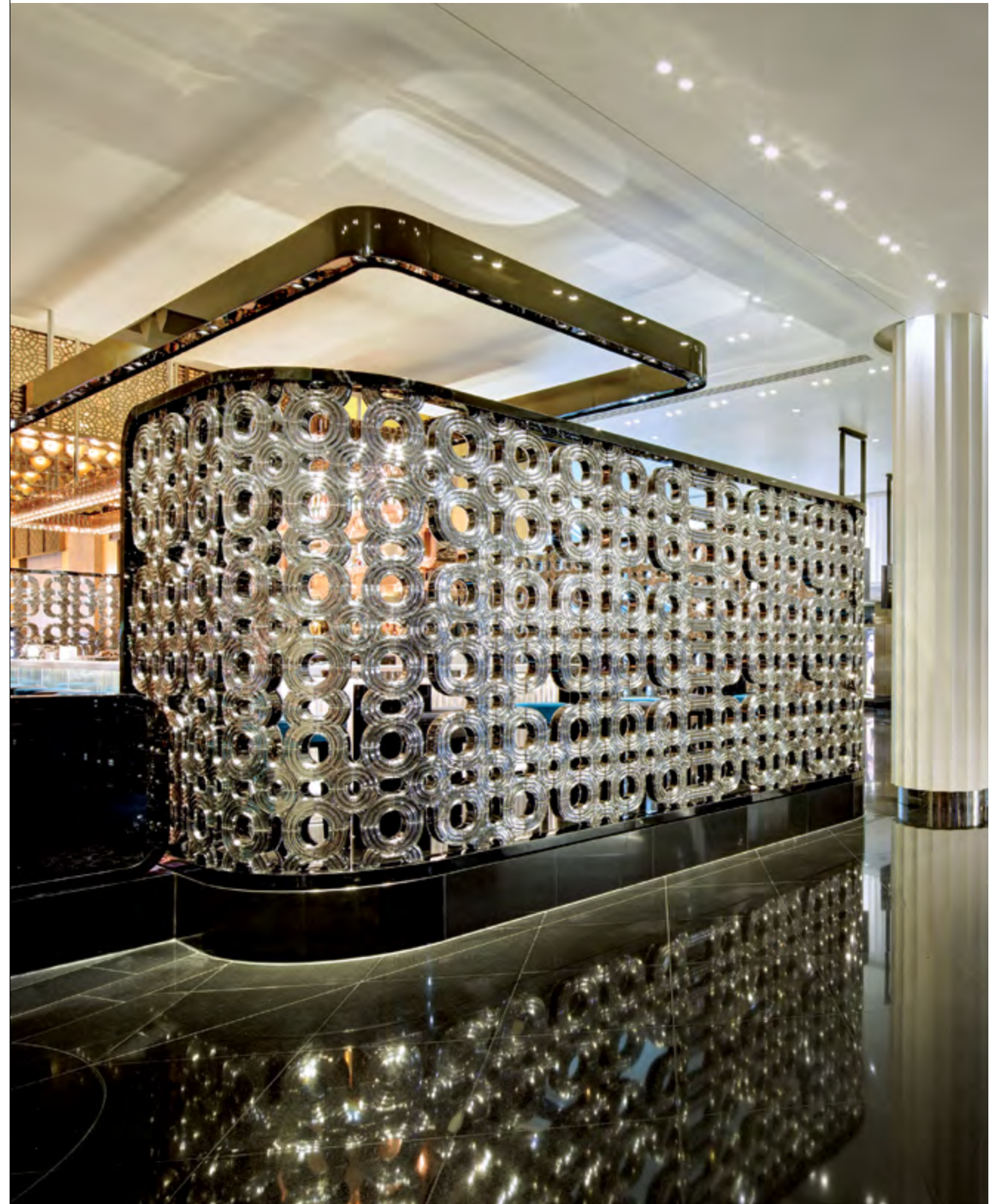


The Heritage of  
**Aqimero**





214



215





216



217







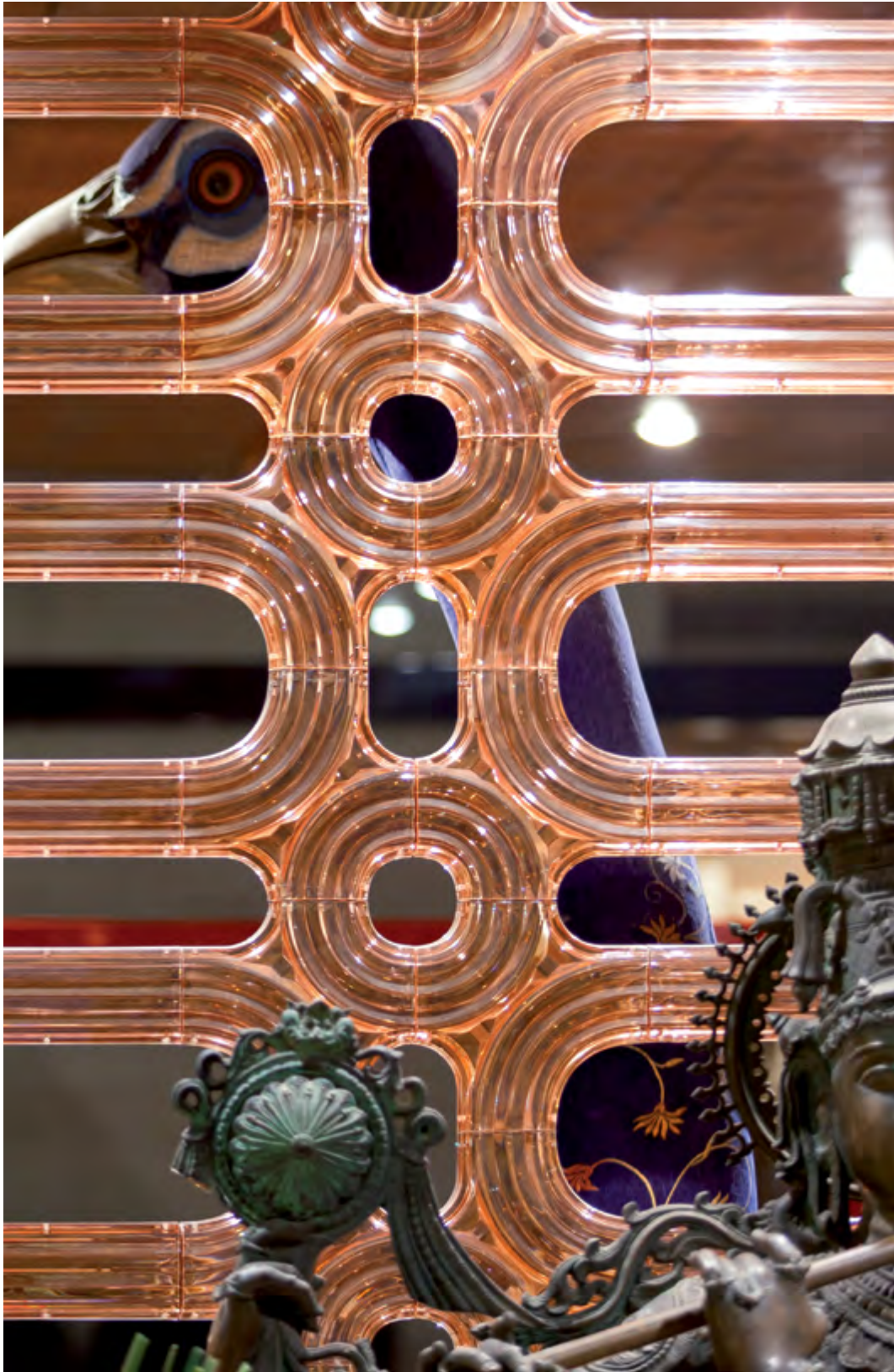


220



221











## LASVIT LIQUIDKRISTAL

Employing some of the most cutting-edge technologies in glass design, Lovegrove collaborated with Lasvit to create the mobile, changing surfaces of Liquidkristal. Inspired by the fluid, organic forms found in nature, the company deployed its most advanced technology — the so-called “high precision heat transfer” — to produce transparent, undulating crystal panels capable of transmuted their shapes into a futuristic kaleidoscope which complements any tastefully designed interior.

---

Designed by / Ross Lovegrove

Lasvit Projects







228

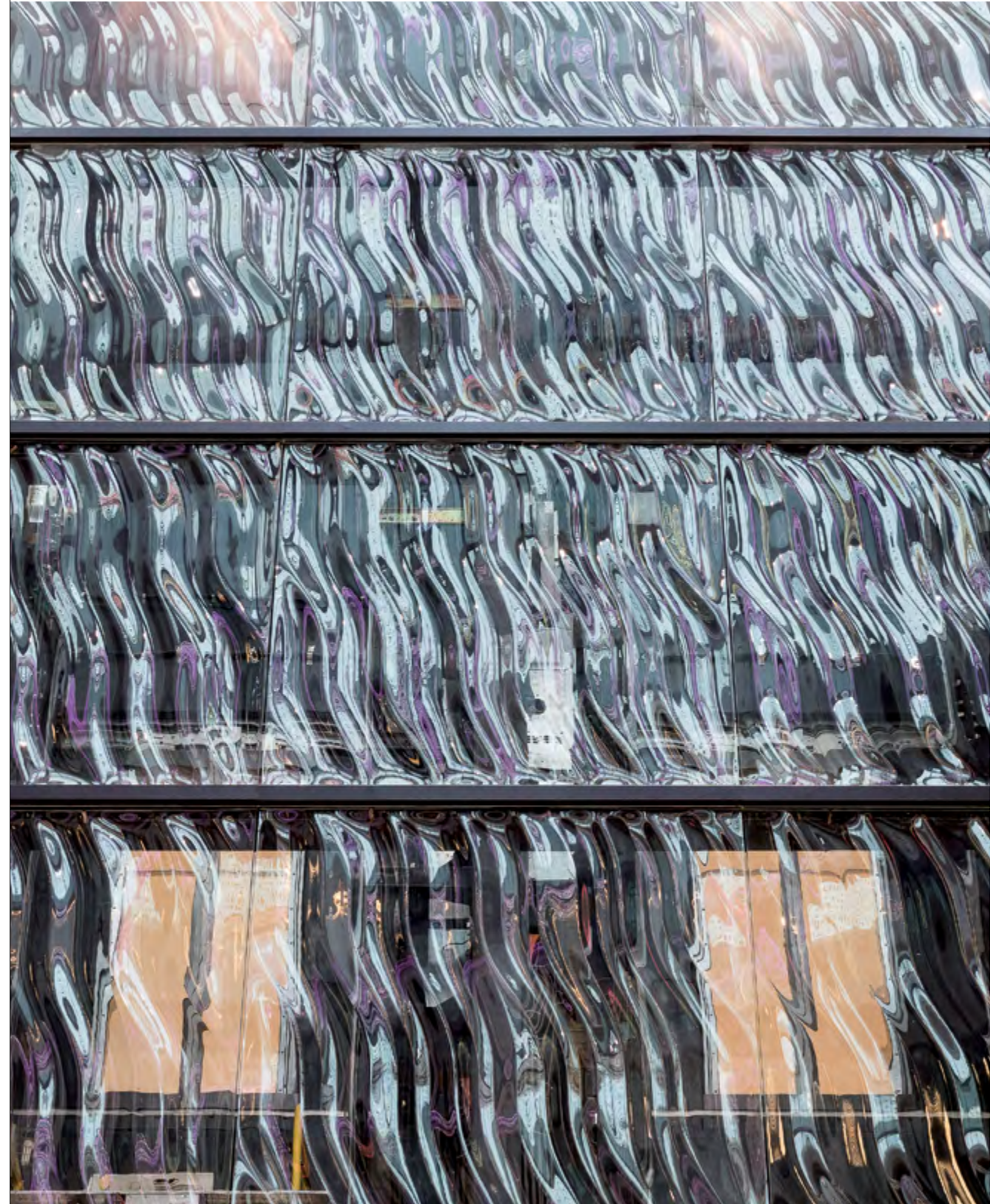


229





230



231



THIS BLANK SPACE  
IS NOT INTENDED  
FOR MAKING  
NOTES!

R E  
F E E R  
E E N  
C  
E S

References







Name	Country / City	Interior Designer(s)	Client	Date
JW Marriott Aerocity	India, New Delhi	Wilson Associates	Asian Hotels (West) Limited	2013
Four Seasons Residences	India, New Delhi	YABU PUSHHELBERG	D&D	2013
Dusit Devarana New Delhi	India, New Delhi	Puccini Group	Bird Hospitality	2012
JW Marriott New Delhi	India, New Delhi	TBC	Aria Hotel	2015
Panchsheel Residence	India, New Delhi	Bobby Mukherji	TBC	2014
Mr. Shailesh Khaitan Residence	India, New Delhi	TBC	Mr. Khaitan	2015
The Mulia Bali	Indonesia, Bali	MULIA GROUP	MULIA GROUP	2012
The Trans Luxury Hotel Bandung	Indonesia, Bandung	Hirsch Bedner Associates	PT PARA BANDUNG PROPERTINDO	2012
Luxury Trans Resort Bali	Indonesia, Bali	Internal Designer	Trans	2014
Mulia Jakarta	Indonesia, Jakarta	N/A	PT. Mulia Intanlestari	2014
Commercial Project Jakarta	Indonesia, Jakarta	N/A	DP Design Pte. Ltd.	2010
Amra Living Indonesia	Indonesia, Jakarta	N/A	Ambra Living	2012
Sharif Private Residence	Indonesia, Jakarta	N/A	Private Client	2011
Raffles Hotel Jakarta	Indonesia, Jakarta	Hirsch Bedner Associates	Pt. Ciputra Adigraha	2013
Bobby Residence Jakarta	Indonesia, Jakarta	Private Client	Private Client	2014
Mulia Hotel Jakarta	Indonesia, Jakarta	N/A	Mulia Group	2015
Intercontinental Jakarta	Indonesia, Jakarta	DESIGN STUDIO SPIN	MidPlaza	2016
Sofitel Singapore City Centre	Indonesia, Jakarta	Wilson & Associates	GuocoLand	2016
Mandarin Oriental Jakarta – Xin Hwa Restaurant	Indonesia, Jakarta	LRF Designers	Mandarin Oriental Hotel Jakarta	2016
Four Seasons Jakarta	Indonesia, Jakarta	Champalimaud	Rajawali	2016
Gunawan Residence	Indonesia, Surabaya	Christ Tju	Private Client	2015
Tommy Residence Surabaya	Indonesia, Surabaya	Chris Tju	Private Client	2014
Gunawan Residence Surabaya	Indonesia, Surabaya	Chris Tju	Private Client	2013
Swiss Belhotel Yogyakarta	Indonesia, Yogyakarta	PTI	Private Owner	2016
Private Residence Erbil	Iraq, Erbil	Hande Tözün	Private Client	2013
Grand Millenium Sulaimani	Iraq, Sulaimani	David Wrenn Interiors	Faruk Group Holding	2014
Waldorf Astoria Jerusalem	Israel, Jerusalem	Metex Design Group–Sinan Kafadar	Waldorf Astoria Jerusalem	2014
Waldorf Astoria Jerusalem The Residences	Israel, Jerusalem	I.P.C. Jerusalem	I.P.C. Jerusalem	2014
B.S.R. Towers	Israel, Tel Aviv	Buki Zuker Designers and Architects	B.S.R. Developers	2014
Rothschild 30, Tel Aviv	Israel, Tel Aviv	Buki Zuker Designers and Architects	Private Client	2014
Terminal Centre	Israel, Ben Gurion, Tel Aviv	Buki Zuker Designers & Architects	Ela Ezra Investments Ltd.	2016
Shivro Rami HQ	Israel, Ramat Gan	Oded Halaf Architects	Shivro Rami Engineering Building & Investments Ltd.	2016
The Gymnasia Tower	Israel, Tel Aviv	Buki Zuker Designers & Architects	The Israel Canada Group	2016
Private Residence Tel Aviv	Israel, Tel Aviv	Private Client	Private Client	2016
Sheraton Hotel Rome	Italy, Rome	HDC Interior Architecture+Design	Aerohotel	2011
Mandarin Oriental Milan	Italy, Milan	Antonio Citterio Patricia Viel Interiors	Gruppo Statuto	2015
Dior Tokyo	Japan, Tokyo	Peter Marino Architect	Christian Dior	2015
Nishinomiya Hotel	Japan, Osaka	N/A	Advance Technology	2010
Graff Takashimaya	Japan, Osaka	Giardino Design	Graff Diamonds	2013
The Shangri-la Tokyo	Japan, Tokyo	Public Areas – HBA, Suites – AFSO	Shangri-la Hotels & Resorts	2008
Graff Nihombashi	Japan, Tokyo	Graff Diamonds	Graff Diamonds	2014
Hotel Nidom	Japan, Tomakomai	Takahiro Hamada, Office Architects 71	Advance Technology	2010
Naji Harnshari Mosque	Jordan, Amman	Atelier White	HAPCO Group	2010
Samer Abu Khadra Villa	Jordan, Amman	Chaos and Order	Samer Abu Khadra	2014
Manaseer Group Office Building	Jordan, Amman	N/A	Ideal Concepts Co.	2014
Park Inn Hilton Astana	Kazakhstan, Astana	L-area Design Studio	Bazis–A Corporation	2013
Yacht AA	Kazakhstan, Almaty	Dialin	–	2015
Seven Club	Kazakhstan, Almaty	SOM – Skidmore, Owings & Merrill LLP	Seven Club	2015
Presidential Clinic	Kazakhstan, Astana	ArchKB	GMT Engineering	2015
Lotte World Tower	Korea, Seoul	Ganart	Lotte	2017
Seven Luck Casino Gangnam	Korea, Seoul	N/A	Grand Korea Leisure Co., Ltd.	2010
Kumgang Ananti Golf & Spa Resort	Korea, Seoul	Spin Design Studio	Emerson Pacific Group	2009
Courtyard Seoul Times Square	Korea, Seoul	Hirsch Bedner Associates	Kyung Bang Co., Ltd.	2009
Conrad Hotel Seoul	Korea, Seoul	LRF Designers Limited	ALG	2012
Necklace	Korea, Seoul	Tihany Design	Tihany Design	2013
Graff Seoul	Korea, Seoul	Giardino Design	Graff Diamonds	2013
The Millennium Hilton Seoul	Korea, Seoul	AEDAS HK	Kukbo	2014
Four Seasons Seoul	Korea, Seoul	LTW SG	Mirae Asset	2015
Dior Seoul	Korea, Seoul	Peter Marino Architect	Christian Dior	2015
The Avenues	Kuwait, Kuwait City	Gensler	Mabaneer Company S.A.K.	2013
Intercontinental Kuwait	Kuwait, Kuwait City	N/A	City Gen Trad & Cont Co Kuwait	2013
Kuwait Cultural Center	Kuwait, Kuwait City	SSH	Al Hani	2015
Kipco Chairman's office	Kuwait, Kuwait City	Kipco	United Gulf Management Limited	2014
Kipco Chairman Club	Kuwait, Kuwait City	Gensler	Kipco	2014
Kipco Chairmans office	Kuwait, Kuwait City	N/A	Kipco	2013
Central Bank of Kuwait	Kuwait, Kuwait City	HOK Kuwait	Central Bank of Kuwait	2016
Kempinski Summerland Beirut	Lebanon, Beirut	HBA Dubai	Lumiere Group	2016
Tripoli International Congress Center	Libya, Tripoli	System Insaat Ltd.	System Insaat Ltd.	2010
Residence Roberta Vilnius	Lithuania, Vilnius	Madam W	Madam W	2013
Borneo Convention Centre Kuching	Malaysia, Borneo	Hirsch Bedner Associates	PPES Works (Sarawak) Sdn Bhd	2010
Royal Clubhouse Johor Bahru	Malaysia, Johor Bahru	N/A	N/A	2013
Renaissance Hotel Johor Bahru	Malaysia, Johor Bahru	Wilson Associates	Million Seed Sdn Bhd	2012
Samer Halimeh Jewellery Shop	Malaysia, Kuala Lumpur	Badih Kantar	Samer Halimeh	2013
Binjai Residency	Malaysia, Kuala Lumpur	HLA	N/A	2011
Jacob House Kuala Lumpur	Malaysia, Kuala Lumpur	TID	Private Client	2013
Ritz–Carlton Langkawi	Malaysia, Langkawi	Tropical Area	AJ Resorts	2016
Graff Monte Carlo	Monaco, Monte Carlo	Giardino interior design	Graff Diamonds	2015
Palace Resorts	Mexico, Cancun	Palace Resorts	Palace Resorts	2017
Sunrise Hotel Cancun	Mexico, Cancun	TAI Architecture & Design	Palace Resorts	2014
Hôtel Hermitage, Le Vistamar Restaurant	Monaco	Pierre Yves Rochon	Societe des Bains de Mer	2010
W&H Crystal Flare	Monaco	W&H Project	Private Client	2014
McLaren showroom	Monaco, Monte Carlo	McLaren Interiors	McLaren Furniture Sarl	2013
La Lestra	Monaco, Monte Carlo	Studio Antonini Architeti	SCP OSMOSE	2014
The Residence of the Custodian	Morocco, Casablanca	Areem Design Services Ltd.	Roots Group Arabia, Ltd.	2011
Residence of the Custodian of the Two Holy Mosques	Morocco, Casablanca	Areem Design Services Ltd.	Roots Group Arabia, Ltd.	2014
Private Palace	Morocco, Casablanca	Areem Design Services Ltd.	Roots Group Arabia, Ltd.	2014
Union Solidarity & Development Association	Myanmar	N/A	Krislitte Singapore Pte Ltd	2009
Private Residence Port Harcourt	Nigeria	N/A	Mr. Sobere Diri	2014
Villa Al Sunaidi	Oman, Muscat	GAJ	HE Ali Al Sunaidi	2013
HH Sayyid Shihab bin Tariq Al Said Villa	Oman, Muscat	Oxspring Associates	Sayyid Shihab bin Tariq Al Said	2015
Graff Oman	Oman, Muscat	Giardino interior design	Graff Diamonds	2015
Hilton Lima	Peru, Lima	HPG International	Razon Social	2013
Fairmont Raffles Makati	Philippines, Manila	Bent Severin & Associates Pte. Ltd.	Kingdom Hotel Investments	2012
Solaire Resort and Casino Manila	Philippines, Manila	Steelman Partners	Bloomberry Resorts	2013
Globe office tower	Philippines, Manila	Direct collaboration with client	Globe	2015
City of Dreams Manila	Philippines, Manila	Westar Macao	MelcoCrown	2014
The Peninsula Manila Private Dining	Philippines, Manila	Direct collaboration with client	The Hongkong and Shanghai Hotels, Limited	2015
Private Residence Algarve	Portugal, Algarve	Arqui+, Vasco Vieira	Private Client	2015
Mango Tree Restaurant	Qatar, Doha	Design Work Portfolio	Foodmark	2010
Private Villa in West Bay	Qatar, Doha	Classical Palace	Private Engineering Office	2011
Al Bida Hotel, Souq Wraqif	Qatar, Doha	Private Engineering Office	Private Engineering Office	2013
Dunes Hotel Doha	Qatar, Doha	AEA Design	AEA Design	2016
Naufar Doha	Qatar, Doha	Stantec	Gulf Lights	2016
Private Rezidence, Brakov	Romania, Brakov	N/A	Private Client	2013
La Stejarii	Romania, Bucharest	HBA London (Shoko)	MEDUSA INTERNATIONAL HOTEL	2014
Villa Alba	Romania, Bucharest	HBA London (Shoko)	Tiriac Holdings	2014
Sverdlovsk State Children's Philharmonic	Russia, Ekaterinburg	N/A	Government of Sverdlovsk Region	2012
Private Residence Eurodom Ekaterinburg	Russia, Ekaterinburg	N/A	Eurodom	2014
Private Residence Ekaterinburg	Russia, Ekaterinburg	N/A	OOO Business Invest	2014

Name	Country / City	Interior Designer(s)	Client	Date
Showroom Radisheva Ekaterinburg	Russia, Ekaterinburg	Showroom Radisheva	OOO Business Invest	2014
Chelyabinsk State Organ Hall	Russia, Chelyabinsk	N/A	Government of Chelyabinsk Region	2013
Private Residence Tiffany	Russia, Krasnodar	Salon Forma	Salon Forma	2013
Sverdlovsk State Ac. Theatre of Music. Comedy	Russia, Moscow	N/A	Government of Sverdlovsk Region	2012
Private Residence Moscow – Golden Rain	Russia, Moscow	Interior Proekt	Altgamma	2012
Private Residence Moscow – Glass Tubes Wall	Russia, Moscow	Interior Proekt	Altgamma	2012
Private Residence Moscow – Icefalls	Russia, Moscow	Baharev & Partners	Baharev & Partners	2013
Grand Coffeemanía Moscow	Russia, Moscow	David Collins Studio	Coffeemanía	2013
Private Residence Nizhnik Moscow	Russia, Moscow	Geometriya	Svetnadin	2014
Private Residence ICE Moscow	Russia, Moscow	Geometriya	Geometriya	2014
Graff Barvikha	Russia, Moscow	Giardino Design	Graff Diamonds	2014
Four Seasons Moscow	Russia, Moscow	Richmond International	Four Seasons Hotels Ltd.	2014
Bubbles Spiral Mebe One Khimki	Russia, Moscow	Ark Buro	Ark Buro	2014
Sheraton Palace Moscow – music bar	Russia, Moscow	GMD Company	Sheraton Palace Moscow	2014
Crystal chandelier Bank Pokrovka	Russia, Moscow	Lofting	Lofting	2014
Staircase chandelier Montevil	Russia, Moscow	Lofting	Lofting	2014
Residence Moscow	Russia, Moscow	Ergostyle	Ergostyle	2015
Residence Patriarch Ponds Moscow	Russia, Moscow	Liberty	N/A	2015
Residence Mosfilmovskaya Moscow	Russia, Moscow	Galina Ginsburg	N/A	2015
Residence St. Petersburg	Russia, Saint Petersburg	Prosvet	Prosvet	2015
Residence Medusas Stavropol	Russia, Stavropol	Modul	Modul	2015
Yacht Petersburg	Russia, Saint Petersburg	A–Kvadrat	Sanlorenzo	2015
Hyatt Burny Vladivostok	Russia, Vladivostok	RPW Design Ltd.	OOO Nash Dom Primorye	2014
Hyatt Regency Vladivostok Golden Horn	Russia, Vladivostok	FG Stijl	OOO Nash Dom Primorye	2014
The Business Gate Jeddah	Saudi Arabia, Jeddah	N/A	Abdullah Ibrahim Al–Subaei Holding Co.	2014
Effat University	Saudi Arabia, Jeddah	Effat University	Effat University	2016
Raffles Makkah Palace	Saudi Arabia, Mecca	Areem Design Services Ltd.	Roots Group Arabia, Ltd.	2009
Makkah Clock Royal Tower, A Fairmont Hotel	Saudi Arabia, Mecca	Areem Design Services Ltd.	Roots Group Arabia, Ltd.	2011
Retaj Hotel	Saudi Arabia, Mecca	Areem Design Services Ltd.	Roots Group Arabia, Ltd.	2009
Conrad Hotel Mecca	Saudi Arabia, Mecca	Wilson Associates	Benjamin West	2015
Conrad Hotel Mecca	Saudi Arabia, Mecca	N/A	AlKamal International	2016
Rawdhat Khuraim Palace	Saudi Arabia, Riyadh	Areem Design Services Ltd.	Roots Group Arabia, Ltd.	2013
King Saud bin Abdulaziz University	Saudi Arabia, Riyadh	Areem Design Services Ltd.	Roots Group Arabia, Ltd.	2011
KAPSARC	Saudi Arabia, Riyadh	Woods Bagot	Aramco	2013
Burj Rafal Hotel Kempinski	Saudi Arabia, Riyadh	VVA International	RAFAL	2013
HHN Palace – Bowling Alley, Riyadh	Saudi Arabia, Riyadh	Areem Design Services Ltd.	Areem Contracting	2008
Four Seasons Hotel Riyadh at Kingdom Centre	Saudi Arabia, Riyadh	EDG Interior Architecture & Design	Four Seasons Hotels Ltd.	2010
NOBU Hotel Riyadh	Saudi Arabia, Riyadh	Rockwell Group	Dhaliyyah	2014
Private Palace	Saudi Arabia, Riyadh	Areem Design Services Ltd.	Roots Group Arabia, Ltd.	2013
Graff Kingdom centre Riyadh	Saudi Arabia, Riyadh	Giardino interior design	Graff Diamonds	2016
23 Gallop park	Singapore	Formwerkz Architects	Private Client	2014
Cairnhill show flat	Singapore	The Mill	Capitaland Singapore	2014
Changi Airport	Singapore	DCA Architects Pte Ltd	Changi Airport Group	2017
Showroom Masek	Singapore	N/A	Masek Showroom	2014
Orchard Apartment	Singapore	KKS International (S) Pte Ltd.	Far East Organization	2014
Orchard Grand Park Hotel	Singapore	Ed Poole	Park Hotel Group	2014
Michael Fiebrich collection	Singapore	Michael Fiebrich Design	Michael Fiebrich	2013
Hamilton Clubhouse	Singapore	Reignwood	Lincotrade and Associates Pte., Ltd.	2013
The Columbus Cruise Ship	Singapore	N/A	Columbus Cruise Co. Ltd.	2007
Shangri-la Hotel Singapore	Singapore	N/A	Allgreen Properties	2007
The St. Regis Singapore & St. Regis Residences	Singapore	Wilson Associates	St. Regis Hotel	2009
The Fairmont Singapore	Singapore	Bent Severin & Associates	RC Hotels (Pte) Ltd.	2009
Marina Bay Sands Singapore	Singapore	Rockwell	Marina Bay Sands Pte Ltd.	2010
Mount Echo Private Residence	Singapore	Private Client	Private Client	2009
Chestnut Drive Private Residence	Singapore	Arc Studio Pte. Ltd.	Private Client	2011
Wilkinson Private Residence	Singapore	N/A	Private Client	2011
The Residences at W Singapore – Sentosa Cove	Singapore	Axis ID Pte. Ltd.	Cityview Place Holdings Pte Ltd.	2011
Mr Lim Private Residence	Singapore	N/A	Private Client	2011
Scotts Square	Singapore	LTW DesignWorks, Singapore	Wheelock Properties Singapore Ltd.	2011
Ardmore Three Showflat	Singapore	Silverfox Studio Pte Ltd.	Wheelock Properties Singapore Ltd.	2011
Claymore Residence	Singapore	N/A	Private Client	2011
Oriole Crescent Residence	Singapore	N/A	Private Client	2011
Chris Harrison Residence	Singapore	Christopher Guy	Chris Harrison	2011
Cove Drive Residence	Singapore	Christopher Guy	Private Client	2012
Marina Bay Sands VIP Lounge	Singapore	N/A	Private Client	2012
The Regent Hotel	Singapore	Pontiac Land Group	N/A	2012
Sentosa Cove Residence	Singapore	Krislitte Singapore Pte Ltd.	N/A	2012
Boulevard Vue Residence	Singapore	Miaja	Private Client	2013
LCVW Residence Singapore	Singapore	N/A	Private Client	2013
George Private Residence	Singapore	N/A	Private Client	2013
Sofitel So Singapore	Singapore	Miaja	Royal Group Holdings Pte Ltd.	2013
Fairmont Hotel Renovation	Singapore	EDG Interior Architecture & Design	RC Hotels (Pte) Ltd.	2013
Resorts World Sentosa	Singapore	YWS Design & Architecture	Resorts World	2013
The Regent Hotel Bar	Singapore	Pontiac Land Group	N/A	2013
Cove Drive Residence Sentosa	Singapore	Desigworx	Private Client	2013
Ritz Carlton Residences	Singapore	LTW DesignWorks, Singapore	Private Client	2012
Sofitel Singapore Sentosa Resort & Spa hotel	Singapore	M.A.X STUDIO and Tonieinbangkok	Royal Group Holdings Pte Ltd.	2015
Park Hotel Alexandra	Singapore	The Mill	CEL Developmnet	2015
Boulevard Vue 1	Singapore	Miaja Design Group	Private Client	2015
Boulevard Vue 2	Singapore	KKS International	Private Client	2015
Astrid Hill Singapore	Singapore	HC Design	Private Client	2015
Temasek Club	Singapore	DP Architects	Temasek Holding	2015
The Capitol Theatre Singapore	Singapore	Michael Fiebrich	Pontiac Group	2015
Private House David Tan	Singapore	TID	Private Client	2015
Private Residence Prodigy	S. Africa, Johannesburg	N/A	Prodigy Investment Group	2011
Graff Stellenbosch	S. Africa, Stellenbosch	Giardino Design	Graff Diamonds	2013
Poets of Space Showroom	Spain, Ibiza	N/A	Poets of Space SL	2011
Marriott The Weligama Bay Sri Lanka	Sri Lanka	Wilson Associates Singapore	East West Properties PLC	2017
Four Seasons Hotel des Bergues Geneva	Switzerland, Geneva	Metex Design Group	t j c a Geneva	2013
Kempinski Du Parc	Switzerland, Mont Pèlerin	BBG–BBGM, Eric Egan	SWISS DEVELOPMENT GROUP	2014
Headquarters of the Association of National Olympic Committees	Switzerland, Lausanne	André Liechti Sàrl	Association of National Olympic Committees	2014
Château d'Oex Private Residence	Switzerland, Chemin Epinettes	CDD Genève Sàrl	Private Client	2014
Restaurant Zur Fernsicht	Switzerland, Heiden	Bruno Stebler	Private Client	2015
Modern Times Hotel Vevey	Switzerland, Vevey	Itten+ Brechbuhl	Arco RED	2016
Private Residence Wollerau	Switzerland, Wollerau	landau + kindelbacher Architekten Innenarchitekten	Private Client	2016
Park Hyatt Zurich	Switzerland, Zurich	N/A	Zurich Escherwiese Hotel GmbH	2012
Private Residence Amsterdam	The Netherlands, Amsterdam	Rappange & Partners Architecten	Private Client	2016
Solitaire Taiwan	Taiwan	HBA Atlanta	HBA Atlanta	2015
Sheraton Hsinchu Hotel, Taiwan	Taiwan, Hsin Chu	Wilson Associates	Grace Construction Co., Ltd.	2009
Hotel Éclat Taipei	Taiwan, Taipei	LRF	Multi Tera International Co., Ltd.	2008
Tiffany & Co., Bellavita Store Taipei	Taiwan, Taipei	Tiffany & Co. Inhouse Design	Tiffany & Co.	2010
Regent Hotel Taipei	Taiwan, Taipei	N/A	Grand Formosa International Hotels Corporation	2011
Lars Residence Bangkok	Thailand, Bangkok	N/A	Private Client	2013
Peninsula Bangkok	Thailand, Bangkok	N/A	Siam Chaophraya Holdings Co.,Ltd.	2011
Prince Mahidol Hall	Thailand, Bangkok	N/A	College of Music, Mahidol University	2016
Siam Kempinski Hotel Bangkok	Thailand, Bangkok	Hirsch Bedner Associates	Kempin Siam Co. Ltd.	2010
Surapol Residence	Thailand, Bangkok	N/A	Private Client	2011
Siam Discovery Shopping Mall Bangkok	Thailand, Bangkok	Nendo	Private Client	2016
Baan Rak Talay Resort	Thailand, Koh Samui	MAP	MAP Architecture & Planning Ltd.	2009



Name	Country / City	Interior Designer(s)	Client	Date
Hotel Atli	Turkey, Ankara	Atli Makina	Stepat & Partner AG	2013
Swissotel Resort, Bodrum Beach	Turkey, Bodrum	Çağdaş Design/Works	Çağdaş Holding	2014
Mandarin Oriental Bodrum	Turkey, Bodrum	Antonio Citterio	Astas Holding	2014
Private Villa Bodrum	Turkey, Bodrum	Erme Arolat Architects	Private Client	2015
The Marmara Taksim Hotel	Turkey, Istanbul	Wilson Associates	The Marmara Hotels & Residences	2011
Vyndham Petek Istanbul	Turkey, Istanbul	Metex Design Group	Kilicbey Turizm	2013
Shangri-La Bosphorus	Turkey, Istanbul	LFM Designers (Hong Kong)	Tanriverdi Group	2013
Vyndham Istanbul Petek Hotel	Turkey, Istanbul	Metex Design Group-Sinan Kafadar	Kilicbey Turizm Isletmeleri Insaat Sanayi	2013
Private Villa Istanbul	Turkey, Istanbul	Can B. Tolon	Private Client	2015
St Regis Istanbul	Turkey, Istanbul	Erme Arolat Architects	Demsa Group	2015
Sheraton Samsun	Turkey, Samsun	Turkey, Mimarlik	Tanriverdi Group	2015
Zorlu Center Istanbul, Raffles	Turkey, Istanbul	HBA London	Zorlu Group	2014
Medical Park Izmir	Turkey, Izmir	FOM GROUUP	FOM GROUUP	2011
Hilton Abu Dhabi	U.A.E., Abu Dhabi	KCA International	Al Farida Investments Company	2009
Hyatt Capital Gate, Abu Dhabi	U.A.E., Abu Dhabi	ADNEC	ADNEC	2011
Hyatt Capital Gate, Abu Dhabi	U.A.E., Abu Dhabi	ADNEC	ADNEC	2011
Jumeirah at Etihad Towers	U.A.E., Abu Dhabi	U+A Architects	Sheikh Suroor Projects Department	2011
The Ritz-Carlton Abu Dhabi	U.A.E., Abu Dhabi	DBI Design	Cinmar	2011
Rihan Heights	U.A.E., Abu Dhabi	Visual Energy (Lighting Consultant)	Mubadala Capitaland Real Estate L.L.C.	2011
Al Maa'ed Wedding Hall, ADNEC	U.A.E., Abu Dhabi	Sparch	ADNEC	2010
Rosewood Abu Dhabi	U.A.E., Abu Dhabi	RPW Design Ltd.	Mubadala	2013
St. Regis Nation Towers	U.A.E., Abu Dhabi	BBG-BBGM New York	International Capital Trading	2013
Graff Abu Dhabi	U.A.E., Abu Dhabi	Hirsch Bedner Associates	Graff Diamonds	2013
Private Villa in Al Bateen	U.A.E., Abu Dhabi	Gilardino Design	Creation Line Decoration	2011
Grand Hyatt Emirates Pearl	U.A.E., Abu Dhabi	MKV	Atlas Hospitality	2015
Cleveland Clinic Abu Dhabi	U.A.E., Abu Dhabi	Aedas	Sultan International Holding LLC	2014
Private Residence Abu Dhabi	U.A.E., Abu Dhabi	Atelier White	Atelier White	2014
Private Residence Khalifa City	U.A.E., Abu Dhabi	N/A	N/A	2014
Saraya Residential Towers	U.A.E., Abu Dhabi	APG	Decovision	2014
Medeor 24x7 Hospital	U.A.E., Abu Dhabi	Al Riyami Interiors	VPS Healthcare	2016
Fairmont Ajman	U.A.E., Ajman	Godwin Austen Johnson	H. H. Dr. Sheikh Sultan Private Office	2015
Softel Dubai	U.A.E., Dubai	Wilson Associates	LEAD development	2013
Q-bara Dubai	U.A.E., Dubai	Studio Glitt	JAS Group	2013
Kempinski Mall of the Emirates	U.A.E., Dubai	Hirsch Bedner Associates	Majid Al Futtaim Properties	2013
Pullman Deira	U.A.E., Dubai	LVV Design Group	Majid Al Futtaim Properties	2013
Graff Dubai	U.A.E., Dubai	Gilardino Design	Graff Diamonds	2013
The Ritz-Carlton Dubai Intern. Financial Centre	U.A.E., Dubai	Hirsch Bedner Associates	Union Properties PJSC	2010
Dubai Metro	U.A.E., Dubai	KCA International	RTA	2009
Sheraton Mall of the Emirates Hotel	U.A.E., Dubai	Studio Lumen (Lighting Consultant)	MAF	2010
HH The Ruler's Court	U.A.E., Dubai	Hubertus Felt	HH The Ruler's Court	2010
At.mosphere Grill&Lounge, Burj Khalifa	U.A.E., Dubai	Tihany Design	Emaar Hospitality	2011
Meydan Grandstand	U.A.E., Dubai	TAK Design Consultants	Meydan LLC	2010
Za'abeel Palace	U.A.E., Dubai	Hubertus Felt	HH The Ruler's Court	2010
Burj Khalifa, L 139	U.A.E., Dubai	N/A	Acoulite	2011
Grand Hyatt Dubai	U.A.E., Dubai	Hirsch Bedner Associates	Grand Hyatt	2011
Millennium Plaza Hotel Dubai	U.A.E., Dubai	Creneau International	Khalid Al Attar General Trading	2011
Private Penthouse In Dubai Marina	U.A.E., Dubai	Esadore Consulting	Esadore Consulting	2012
Private Residence Dubai	U.A.E., Dubai	Insignia	Insignia	2012
Al Zain Jewellery, Mall of the Emirates	U.A.E., Dubai	N/A	Al Zain Jewellery	2012
Villa Palm Jumeirah	U.A.E., Dubai	N/A	Sostines Sviesos	2012
The Fairmont Palm Hotel & Resort	U.A.E., Dubai	N/A	IFA Hotels	2013
Jumeirah Creekside Hotel	U.A.E., Dubai	DVP Dubai	Dubai Duty Free	2012
Jumeirah Beach Hotel	U.A.E., Dubai	RCD	Dubai Duty Free	2012
Mina A' Salam Dubai	U.A.E., Dubai	KCA International	Jumeirah Group	2014
Fairmont Dubai	U.A.E., Dubai	KCA International	Jumeirah Group	2014
Private Villa Emirates Hills	U.A.E., Dubai	KCA International	H. H. Dr. Sheikh Sultan Private Office	2014
Oberoi Dubai	U.A.E., Dubai	AAC Interiors	AAC Interiors	2013
Hyatt Regency Dubai	U.A.E., Dubai	LTW Design/Works, Singapore	Rani International Development LLC	2013
The Langham Palm Jumeirah	U.A.E., Dubai	Godwin Austen Johnson	WASL / Depa	2015
Business Bay Hotel	U.A.E., Dubai	Aedas	DAS Projects	2015
The Cosmopolitan	U.A.E., Dubai	LVV Design Group	Abdulsalam Al Rafi Group LLC	2014
Hyatt Regency Presidential Suite	U.A.E., Dubai	DAMAC	DAMAC	2014
Wafa Private Residence	U.A.E., Dubai	KCA International	WASL / FINO	2014
Mr. Yusuf Serkal Villa	U.A.E., Dubai	Private	Wafa Al Mualla	2014
The Cosmopolitan	U.A.E., Dubai	Private	Mr. Yusuf Serkal Villa	2014
Shadi Char Crystall Rocks	U.A.E., Dubai	Damac	N/A	2014
Palazzo Versace	U.A.E., Dubai	Private	Mr. Shadi Char	2015
Steigenberger Hotel Dubai	U.A.E., Dubai	House of Versace	ENSHAA	2015
Marrriott Renaissance Business Bay Hotel	U.A.E., Dubai	LVV Design Group	Twenty Fourteen Holding	2016
Dhamani Residence Dubai	U.A.E., Dubai	VVA International	RDK Group	2016
Dubai Design District	U.A.E., Dubai	Callison	Dhamani Family	2016
Waldorf Astoria Ras Al Khaimah	U.A.E., Ras Al Khaimah	Aedas	Tecom Investments	2016
Boodles Chester	UK, Chester	Hirsch Bedner Associates	Ras Al Khaimah Tourism Authority	2013
Radisson Edwardian Guildford	UK, Guildford	Eva Jiricna Architects	Boodles	2014
Victoria's Secret London	UK, London	Rabih Hage Ltd.	Rabih Hage Ltd.	2011
Graff Harrods	UK, London	L Brands	L Brands	2015
Boodles New Bond Street	UK, London	Gilardino interior design	Graff Diamonds	2015
The Chilterns London	UK, London	Eva Jiricna Architects	Boodles	2015
Private Residence London	UK, London	Rabi Hage	Galliard Homes	2015
Graff Diamonds Harrods	UK, London	Katharine Pooley	Private Client	2015
Christian Dior New Bond Street	UK, London	N/A	Graff Diamonds	2015
Boodles Savoy	UK, London	Peter Marino	Dior	2016
Sake No Hana	UK, London	Al Design	Boodles	2010
Four Seasons Hotel London at Park Lane	UK, London	Hakkasan	Cha Cha No Hana	2011
Boodles Sloane Street	UK, London	Pierre Yves Rochon	Four Seasons Hotels Ltd.	2011
Private Residence Kensington Palace Gardens	UK, London	Eva Jiricna Architects	Boodles	2012
Private Residence Kensington Walpole Mayfair	UK, London	Brodin Design	Boodles	2012
Marketing suite Beaufort Park, Hendon	UK, London	LDPI	Brodin Design	2012
Shangri-la at the Shard	UK, London	N/A	N/A	2013
Lilie Marketing Suite	UK, London	St. George	St. George	2013
Chesterfield Hill Residence	UK, London	Shangri-la Hotels & Resorts	Shangri-la Hotels & Resorts	2014
Avenue Road Residence	UK, London	Johnson Naylor	Johnson Naylor	2013
Notting Hill Private Residence	UK, London	N/A	Harrods	2014
One Hyde Park Apartment	UK, London	N/A	Jaysam contractors	2014
One Hyde Park Apartment	UK, London	N/A	N/A	2014
Wilton Crescent Residence	UK, London	Candy and Candy	Candy and Candy	2012
Private Residence Eaton Place	UK, London	Candy and Candy	Candy and Candy	2012
Presidential Suite Intercontinental Park Lane	UK, London	N/A	N/A	2012
St. James Court Hotel	UK, London	HBA London	Woodway Properties	2012
Private Residence Stafford Terrace	UK, London	IHG	IHG	2012
Garton Jones showroom	UK, London	Broadway Malyan	St. James Court Hotel	2012
Private Penthouse Pavilion	UK, London	Shalini Misra	N/A	2013
Boodles Harrods	UK, London	3equals1design Ltd.	Garton Jones	2014
Private Residence Northwood	UK, Northwood	Morpheus	Morpheus	2014
Private Residence Surrey	UK, Orpington	Eva Jiricna Architects	Boodles	2012
Project Dale	UK, London	Micasa	N/A	2013
LLK Cannon Street	UK, London	N/A	Private Client	2013
Luxlo Private Apartment	UK, London	1508 London	Ideaworks	2014
Maritime Headquarters	UK, Felixstowe	KKS International (S) Pte Ltd.	Celtic Contractors	2014
		Luxlo	Luxlo	2014
		N/A	Maritime Transportation	2014

Name	Country / City	Interior Designer(s)	Client	Date
Wimbledon Club	UK, Wimbledon	Joanna Trading	All England Lawn and Tennis Club	2014
Private Residence Expolight Kurakhovo	Ukraine, Donetsk	Expolight	N/A	2014
Private Residence Grand Royal	Ukraine, Donetsk	Grand Royal	Grand Royal	2013
Minister's Office	Ukraine, Kiev	OTO Design	OTO Design	2012
Private Residence Kiev	Ukraine, Kiev	OTO Design	OTO Design	2013
Private Residence Svetoria Bouquet	Ukraine, Kiev	Svetoria	Svetoria	2013
Gulliver Business Centre Kiev	Ukraine, Kiev	MIK Design	MIK Design	2014
Private Residence Kiev	Ukraine, Kiev	MIK Design	MIK Design	2015
Private Residence Onix	Ukraine, Odessa	Onix	Onix	2015
Albany Bahamas Lobby	USA, Bahamas	The A Group	Tavistock Group	2017
Parx Casino	USA, Bensalem, PA	Floss Barber	Greenwood Gaming & Entertainment	2011
Sands Casino Resort Bethlehem	USA, Bethlehem, PA	Floss Barber	The Venetian Resort Hotel Casino	2011
Beverly Wilshire in Beverly Hills	USA, Beverly Hills, CA	Barry Design Associates	Four Seasons Hotels Ltd.	2008
Boston Chandelier	USA, Boston	HOK	Electric Supply Center	2015
Graton Hotel	USA, California, Rohnert Park	Friedmutter Group	Station Casinos	2017
Graton Resort & Casino	USA, California, Rohnert Park	Friedmutter Group	Station Casinos	2016
Omni San Diego Hotel	USA, California, San Diego	Waldrop + Nichols Studio	Ornni Hotels&Resorts	2016
Saks Chicago	USA, Chicago, IL	Andrea Kikoski	Saks 5th Avenue	2013
Langham Hotel Chicago	USA, Chicago, IL	Richmond International	Champion Global Services Limited	2013
540 W Madison	USA, Chicago, IL	N/A	540 W Madison Holdings	2014
Maple & Ash	USA, Chicago	Studio K Creative	Maple & Ash company	2015
540 W Madison	USA, Chicago	Inhouse	Joseph Mirzachi	2016
300 S Riverside	USA, Chicago	Inhouse	Joseph Mirzachi	2016
Warwick Allerton Hotel	USA, Chicago	Perkins & Eastman	-	2016
Blake House Laguna	USA, Coeur d'Alene, ID	Laguna Design Center	The Resort at Coeur d'Alene	2014
Hatcher Private Residence	USA, Dallas	Michael Fiebrich Design	Private Client	2009
Hatcher Private Residence	USA, Dallas	Michael Fiebrich Design	Project Dynamics	2009
Vince Carter Private Residence	USA, Daytona Beach, FL	Darrel Schmitt Design Associates, Inc.	HD Supply	2009
Westin Denver International Airport	USA, Denver, CO	Gensler	City and County of Denver	2015
Graff Greenwich	USA, Greenwich	Graff Diamonds	Graff Diamonds	2017
Social Private Residence	USA, Laguna Beach, CA	N/A	Social	2014
Trump International Hotel Las Vegas	USA, Las Vegas, NV	Design 360	Fisk Electric	2007
Mandalay Bay	USA, Las Vegas, NV	Paul Steelman Design Group	MGM Grand	2010
Mandalay Bay	USA, Las Vegas, NV	Paul Steelman Design Group	MGM Grand	2008
Fertitta Residence Las Vegas	USA, Las Vegas, NV	Kara Siffermann	Station Casinos	2008
Aliante Station Casino	USA, Las Vegas, NV	Friedmutter Group	Station Casinos	2009
Mandarin Oriental, Las Vegas	USA, Las Vegas, NV	Tihany Design	MGM City Center	2010
Mandalay Bay	USA, Las Vegas, NV	Paul Steelman Design Group	MGM Grand	2010
Thunder Valley Casino	USA, Lincoln, CA	Steelman Partners	United Auburn Indian Community	2010
Four Seasons Hotel Los Angeles at Beverly Hills	USA, Los Angeles, CA	EDG Interior Architecture & Design	Four Seasons Hotels Ltd.	2010
Princess Cruise ship	USA, LA/IT, Monfalcone	in - house designers	Princess Cruises/Carnival Corporation & plc	2013
Hilton McLean Tyson's Corner	USA, McLean, VA	Hirsch Bedner Associates	Hilton Hotels	2011
Gun Lake Casino Wayland	USA, Michigan	Friedmutter Group	Station Casinos	2017
Seabourn Cruise Ship	USA, Miami, FL	Tihany Design	Tihany Design	2017
Seabourn Cruise Ship	USA, Miami, FL	Tihany Design	Tihany Design	2017
NauMius Hotel	USA, Miami, FL	Sixty Hotels	Sixty Hotels	2015
Viceroy Miami, Icon Brickell	USA, Miami, FL	Kelly Vwearstler	Project Dynamics/Related Group	2009
Viceroy Miami, Icon Brickell	USA, Miami, FL	Philippe Starck	Project Dynamics/Related Group	2009
The Forge Restaurant   Winebar by Shareef Mainik	USA, Miami, FL	Francois Frossard	The Forge Aim Investment	2010
Gaylord Opryland Resort	USA, Nashville, TN	TVSDesign	Gaylord Entertainment	2010
Lollipops Bahamas	USA, Nassau	workshop apd	workshop apd	2017
Salute Trattoria Italiana, Red Rock Casino	USA, Nevada, Las Vegas	Friedmutter Group	Station Casinos	2015
551 West 21st Street	USA, NYC, NY	Foster + Partners	SR Capital NYC	2017
Hudson Yards Residential Tower	USA, NYC, NY	Andre Kikoski Architect	Related	2017
Manhattan Condos	USA, NYC, NY	Mango Design	N/A	2013
New York Palace hotel	USA, NYC, NY	BBG_BBGM, Jeffrey Beers, Champalimaud	Northwood Hospitality	2013
Affinia Manhattan	USA, NYC, NY	Ventresca Design	Denihan Hospitality	2013
Westin Times Square	USA, NYC, NY	Jeffrey Beers	Tishman	2013
432 park avenue	USA, New York	Bentel and Bentel	Macklowe properties	2015
605 west 42nd street	USA, New York	Rockwell Group	The Molinjan Group	2016
551 west 21st street	USA, New York	Foster and Partners	SR Capital	2015
Ritz Carlton Philadelphia	USA, Philadelphia	Wimberly Interiors	The Parker Company	2016
Avenue Of Arts	USA, Philadelphia	JKRP Architects/ Floss Barber	Billows	2016
Scottsdale Resort, AZ	USA, Scottsdale, AZ	WATG	Scottsdale Resort	2008
Hilton Shorthills	USA, Shorthills, NJ	Bill Rooney	Hilton Hotels	2013
Snoqualmie Lounge	USA, Snoqualmie, WA	S T Y L E +	Yates-Silverman	2007
Ritz Carlton St. Louis	USA, St. Louis	BAMO	Ritz Carlton St. Louis	2013
Don Cesar	USA, St. Pete Beach, FL	SFA Design	Don Ce Sar Resort Hotel	2013
One Uptown	USA, Texas, Dallas	Wilson Associates	Dallas Stoneleigh Companies	2016
Four Seasons Resort and Club Dallas at Las Colinas	USA, Texas, Dallas	Richmond International	Four Seasons Hotels and Resorts	2016
Hyatt Regency Tysons Corner	USA, Tysons Corner	Looney and Associates	Neil Locke Associates	2015
Hyat Tysons's Corner	USA, Tysons Corner, VA	Looney Associates Dallas	Neil Locke Associates	2014
Royal Princess (Princess Cruise ship line)	USA, LA/IT, Monfalcone	Princess Cruises/Carnival Corporation & plc, GEM Srl	Princess Cruises/Carnival Corporation & plc	2013
Regal Princess (Princess Cruise ship line)	USA, LA/IT, Monfalcone	Princess Cruises/Carnival Corporation & plc, GEM Srl	Princess Cruises/Carnival Corporation & plc	2014



**N I D**  
**N E D**  
**X**





**Canada**  
Victoria  
Fairmont Empress → 56

**United States of America**  
Santa Clarita  
Princess Cruise Ships → 196

**United States of America**  
Phoenix  
Renaissance → 90

**United States of America**  
Denver  
The Westin → 124

**United States of America**  
New York  
Sky → 160

**United States of America**  
Philadelphia  
The Ritz-Carlton → 210

**United States of America**  
Chicago  
540 West Madison → 170  
Sophie's at Saks Fifth Avenue → 226  
The Langham → 110



**United Kingdom**  
London  
Office in Mayfair → 182  
Private Residence → 140  
Sake No Hana Restaurant → 95

**Russia**  
Moscow  
Coffeemania Moscow → 48

**China**  
Kaifeng  
Pullman → 86

**China**  
Beijing  
Four Seasons → 60  
Jingrun Clubhouse → 218  
Kerry Centre Office Tower → 174  
Pacific Century Place → 186  
Reignwood Pine Valley Golf Club → 154

**South Korea**  
Seoul  
Lotte WWorld Tower → 176

**Prague**  
Czech Republic  
Quadrio → 188  
Lasvit Showroom → 206

**Russia**  
Sochi  
Sochi Casino & Resort → 216

**Beirut**  
Lebanon  
Private Residence → 136

**France**  
Paris  
The Peninsula → 118

**Azerbaijan**  
Baku  
Fairmont, Flame Towers → 54

**Monaco**  
Monte Carlo  
Hotel de Paris → 68

**India**  
Kolkata  
Private Residence → 138

**France**  
St Geyrac  
Chateau Montferrier → 128

**Turkey**  
Bodrum  
Mandarin Oriental → 78

**China**  
Shanghai  
Bellagio → 40  
One Park Gubei → 150  
Wanda Reign on the Bund → 224

**Taiwan**  
Taipei  
Tiffany & Co., Bellavita Store → 190  
Mandarin Oriental → 220

**Kuwait**  
Kuwait  
Central Bank of Kuwait → 12  
Four Seasons → 66

**China**  
Guangzhou  
Conrad → 50

**China**  
Macao  
St. Regis → 108

**Philippines**  
Manila  
Shangri-La → 98

**Thailand**  
Bangkok  
Prince Mahidol Hall → 22

**U.A.E.**  
Abu Dhabi  
Hyatt Capital Gate → 72  
Jumeirah at Etihad Towers → 74  
Rihan Heights → 158  
Rosewood → 94

**U.A.E.**  
Dubai  
Address Boulevard → 32  
Dharami Residence → 132  
Dubai Opera → 18  
Palazzo Versace → 84  
The Dubai Metro → 28

**China**  
Hong Kong  
133 Wai Yip Street → 166  
Taikoo Place Apartments → 162  
The Peninsula Hong Kong → 114

**Singapore**  
Singapore  
Changi Airport → 14  
Fairmont → 58  
OUE Downtown Gallery → 184  
SO Sofitel → 102  
Sofitel Sentosa Resort & Spa → 106  
The Ritz-Carlton Residences → 146

**Singapore**  
Surabaya  
Private Residence → 142

**Australia**  
Melbourne  
The Crown Casino → 214

**Indonesia**  
Jakarta  
Ayana Midplaza → 16  
Four Seasons → 42  
Mandarin Oriental, Li Feng Restaurant → 60



# OFFICE

Offices

**Headquarters  
Nový Bor**  
nám. Míru 55  
473 01 Nový Bor  
Czech Republic  
T +420 481 120 810  
F +420 481 120 622  
E lasvit@lasvit.com

**Flagship Showroom  
Prague**  
Lasvit s.r.o.  
Komunardů 32  
170 00 Prague  
Czech Republic  
T +420 222 362 990  
E lasvit@lasvit.com

**USA Headquarters  
Showroom New York**  
Lasvit Inc. / New York  
51 Wooster Street  
New York  
NY 10013, USA  
T +1 212 219 3043  
F +1 212 219 3053  
E america@lasvit.com

**Dubai**  
LASVIT Middle East FZ-LLC  
PO Box 333272  
Dubai Design District  
A 109, Building 6  
Dubai, UAE  
T +971 4453 8689  
F +971 4453 8784  
E me@lasvit.com

**Hong Kong**  
Lasvit (H.K.) Limited  
8F / The Hennessy  
256 Hennessy Road  
Wan Chai / Hong Kong S.A.R.  
T +852 2866 1234  
F +852 2866 2212  
E asia@lasvit.com

**Shanghai**  
Lasvit Shanghai Co., Ltd.  
Room 237 2F  
No. 315 Yuyuan Rd.  
Shanghai 200040, China  
M +86 182 1709 0498  
E shanghai@lasvit.com

**Singapore**  
Lasvit (Singapore) Pte. Ltd.  
75 Neil Road  
Singapore 088902  
T +65 6542 9422  
E singapore@lasvit.com

**London**  
Lasvit UK Ltd.  
3rd Floor  
131 Shoreditch High Street  
London, E1 6JE  
United Kingdom  
T +44 20 7490 2004  
E uk@lasvit.com

**Paris**  
Lasvit (FR)  
T +33 (0) 7 50 90 78 04  
E france@lasvit.com

**Moscow**  
Lasvit (Russia & CIS)  
Bryusov pereulok 2/14  
building 9  
Moscow 125009  
Russian Federation  
T +7 985 6450920  
E russia@lasvit.com

**Astana**  
Lasvit (Kazakhstan)  
Kunaev Street 12/1  
office 115  
Astana 010000  
T +7 776 774 9669  
E kazakhstan@lasvit.com

**lasvit.com**



**N**

**O**

**T**

**E**

**S**



This catalogue is for informational purposes only. This catalogue cannot be considered contractual documentation and does not represent a contract offer. The visualization of the products in this catalogue is solely illustrative. Due to the manufacturing process by hand, the factual appearance of the products and their parameters may significantly differ from the information presented in this catalogue, including the product pictures. The company Lasvit s.r.o. hereby reserves the right to change any parameters presented in this catalogue. The appearance and parameters of the ordered products shall be based on individual agreements and respective contractual documentation.

#### Ecology

Maximum attention is given to design and manufacturing processes, responsible use of resources, and careful choice of materials and technologies, in order to achieve energy balance.

#### Heritage

Lasvit represents Czech glassmaking artistry and tradition through breathtaking works of glass designed by internationally renowned designers and crafted by Czech glassmakers.

#### Quality

Quality is an essential choice for us at all stages of product development, manufacturing, transportation, and after-sales services.

#### First published and distributed by

Lasvit s.r.o.  
Komunardů 32 / Praha 7 / 170 00 / Czech Republic  
T +420 481 120 810 / F +420 481 120 622  
E lasvit@lasvit.com / www.lasvit.com

#### Edited and produced by Lasvit s.r.o.

Curated by Maxim Velčovský  
Book design — Symbiont (Denisa Myšková, Ondřej Lím)  
Photo — Filip Šlapal / Jan Kuděj / Salim Issa / Lukas Pelech Atelier /  
Michal Kohut  
Lyrics — Michaela Freeman, Vít Bohal, Marcel Náhlovský, Jana Naisarová  
Translation — Vít Bohal

© Lasvit 2018

All rights reserved. This publication or its parts may not be reproduced, stored or shared in any form, including texts and photos without permission in written form from the copyright owner(s).

Printed and bound in the Czech Republic / Indigoprint s.r.o.





Designed and manufactured  
with pride in the Czech Republic.

[lasvit.com](http://lasvit.com)