



LASVIT

Fuorisalone 2024
Palazzo Isimbardi
15-21 April 2024

Re/Creation

Re/Creation

We are introducing fused glass for architecture. The only glassmaking technique that requires you to do very little to create something big. The essence of fused glass lies in letting go. Extremely hot melted glass is gently coaxed to relax, spread, and naturally take the shape of a specially designed form, guided solely by its weight and the subtle pull of gravity. Similarly, a creative mind is most prolific and innovative when relaxed and free of everyday pressures and demands.

Escape everyday creative pressures, high expectations, and practical issues to find inspiration in Re/Creation – a space that encourages you to let go. Fused glass is just one of the innovative glassmaking techniques Lasvit showcases at Re/Creation. In the serene embrace of Palazzo Isimbardi, we set up a sanctuary for creative escapism, a peaceful retreat amid the hustle and bustle of Milan's Salone week. Re/Creation is designed as a haven where minds are free to wander, inspired by the fluid grace of molten glass, inviting visitors to... do nothing.

PORTA by Maxim Velčovský

Aiming to redefine the relationship between glass and architecture, the centerpiece of Re/Creation is an installation designed by Lasvit's Art Director Maxim Velčovský. Entitled Porta, the monumental piece employs Lasvit's unique expertise in artisanal glass for architecture as it showcases the various facets of fused glass. Crafted in Europe's largest glass kiln, this installation is a display of technical prowess and an illustration of the brand's capabilities in terms of size and variability, whilst ensuring precision and creativity that meet the rigorous demands of architectural projects.





MASTABA by Wanda Solík Valihrachová

The Mastaba design concept draws its inspiration and distinctive shape from the stepped pyramids, architectural structures that have marked various cultures around the globe through history. This versatile design allows Mastaba to serve multiple purposes within an interior space, including wall decoration, partitions, or paneling, blending functionality with aesthetic appeal seamlessly. Crafted from fine glass, it not only introduces a unique atmosphere and originality to any room but also provides privacy.



BOIS DE CRISTAL by Maria Čulenová

Bois de Cristal by Lasvit Senior Designer Maria Čulenová showcases innovation through a blend of materials like folded plywood, copper, and textured fused glass, accented with custom LED lighting. This modular design concept draws inspiration from the dense jungle, its modules reminiscent of the intertwining lianas that weave through the forest canopy. With 18 arms extending like lianas, Bois de Cristal is designed to transform and illuminate spaces, embodying an homage to the natural world's intricate patterns and light.



NEBULA by Claesson Koivisto Rune

Entitled Nebula, Lasvit's 2024 lighting collection debut designed by studio Claesson Koivisto Rune, draws inspiration from the radiant expanses of space where stars originate. Available in Silver, Gold, and Rose Gold finishes and offering a choice between ceiling lamp and two sizes of table lamps, this collection merges the elegance of borosilicate glass with the reflective beauty of a metal coating. This partnership between Lasvit and Claesson Koivisto Rune epitomizes the blend of minimalist Scandinavian design with an innovative approach to handcraftsmanship.





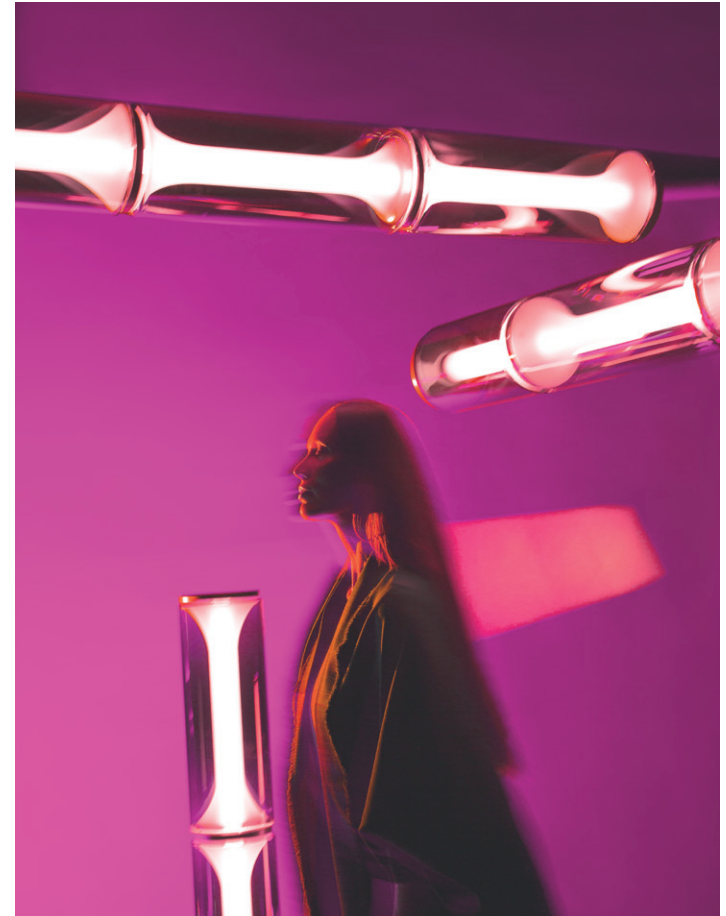
NEVERENDING GLORY by Jan Plecháč & Henry Wielgus

Limited Edition: La Scala Gold

Celebrating the 10th anniversary of the Neverending Glory collection, Lasvit unveils a gold edition of the La Scala chandelier in a limited release of 100 pieces. This edition honors the collection's global acclaim for its elegance and craftsmanship, inspired by the opulence of famous opera houses. The golden La Scala enhances spaces with timelessness and sophistication, marking a decade of design excellence.

MILES by Yabu Pushelberg

Miles is a collection inspired by the many parallels between music making and glass blowing. Formally there is a clear nod to brass instruments, an image that springs to mind when watching Lasvit's craftspeople blowing glass. Less clear is the constant balance that must be maintained when pushing glass making to its limit, one between innovation and the physical constraints of the material and techniques. We might see that same balancing act being performed during a trumpet player's solo or a jazz vocalist's scat. Simple outer casings house the curvaceous and elegantly fluted horn shapes within. When stacked, these linked inner forms become a rhythmic sculpture of light, one that draws attention but is in harmony with any setting.





CONSTELLATION by David Rockwell

New York City's shimmering night sky and the celestial landscape depicted in the iconic ceiling mural at Grand Central Terminal inspired the award-winning architect David Rockwell's lighting collection for Lasvit. Entitled Constellation, the series comprises a family of six light designs that bring the light of distant stars down to earth. The collection additions include the Ursa Minor chandelier, Cassiopeia wall sconce, and Gemini table lamp, which is a "sibling" of the Polaris floor lamp. These three pieces expand the collection that previously contained a horizontal chandelier, a wall sconce, and a floor lamp, each representing the constellations of Cassiopeia, Tri Star, and Polaris respectively.

CIPHER by Yabu Pushelberg

The Cipher collection, created by Yabu Pushelberg—a design duo renowned for its meticulous attention to detail and uninhibited exploration of artistry—perfectly embodies the studio's ethos. True to form, the Cipher collection merges bold contemporary design with precise craftsmanship. Each glass piece is intricately decorated with a series of precise cuts and engravings, allowing light to traverse only between connection points, thus orchestrating a play of reflections and shadows throughout the surrounding space. The collection features a diverse range of lights and compositions. Whether showcased individually or grouped, the pieces offer versatile arrangements, transforming any modern interior into an unparalleled experience.



HOME & DÉCOR COLLECTIONS

The moments of wonder take the most personal form. Our design home&décor collections bring to your space the passion, and energy they radiate beyond their crystal outline.

Shaped by some of the most brilliant designers' ideas, Lasvit glassware proudly bear the names of Kengo Kuma, Yabu Pushelberg, Arik Levy and many others. Our design experiments with natural forces and materials while our glass-makers breathe their creative energy into every piece. Giving our collections an eclectic Bohemian feel that is essential for every piece of Lasvit design.



ABOUT Lasvit

Lasvit is a Bohemian design and artisan house bringing thousand years of glassmaking craftsmanship into the future by making sublime glass and light creations that are loved globally.

We design and produce site-specific glass lighting installations, glassware collections, and artisanal glass for architecture. Through our work, we strive to find what is overshadowed by superficial beauty. We are after meaningful, human, and even mind-healing experiences—a source of joy and fulfilment that material possessions often cannot replicate.

Lasvit Headquarters
Palackého nám. 170
Nový Bor
Czech Republic

Lasvit Showroom
Komunardů 894/32,
Holešovice, Prague 7
www.lasvit.com

